

RCS Actuators Sure 24, 25

Optional Manual Override Available



NEMA 4

NEMA 4 Enclosure

Approvals (SURE 24 Only)

A.C. Models Only

Canadian Standards Association
Enclosure 4

NEMA 7 Enclosure

Approvals (SURE 24 Only)

A.C. Models Only

Canadian Standards Association

CSA NRTL/C—Class I, Divisions 1 and 2,
Groups C and D

CSA NRTL/C—Class II, Divisions 1 and 2,
Groups E, F and G

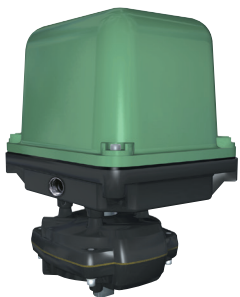
CSA NRTL/C—Approved to UL standard
No. 429, Electrically
Operated Valves

CSA NRTL/C—Approved to UL

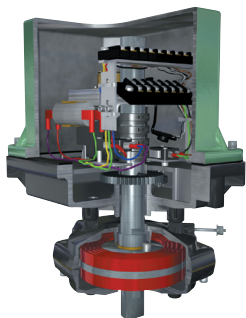
Standard No. 1203, Electrical
Equipment for use in
Explosion - proof

And Dust - Ignition - proof

Hazardous (Classified)
Locations



NEMA 7



Sure 24

Model

Sure 24, Sure 25

Typical Application

For on/off and modulating control of:

- Part turn ball, butterfly, plug valves or rotary dampers when emergency shutdown or shutoff capability is required in the event of a loss of power.

Temperature Range

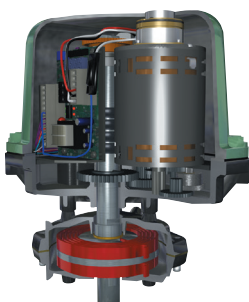
Standard: -40°F to +150°F

-40°C to +65°C

Optional: -60°F to +150°F

-50°C to +65°C

Optional: Compliance to NFPA 130, capable of operation after exposure to ambient temperature of 482°F (250°C) for a minimum of one (1) hour.



Sure 25

Voltage

115 VAC, 1 Phase, 50/60 Hz.

230 VAC, 1 Phase, 50/60 Hz.

Torque Range

300 pound inches spring end (34 newton meters)

Speed Range

5 and 10 seconds for 90° revolution, motor operation

2 to 5 seconds, spring operation

Spring

Helical torsion spring, spring steel, XYLAN® coated

Special Features

AC Voltages

2 - SPDT Switches,
PTC Heater, Motor Brake

115 and 230 VAC, 1 Phase, 50/60 Hz.

Model	Output Torque Inch Pounds (N.m)	Electrical Speed of Operation 60 Hz. (50 Hz.)	Spring Speed of Operation	Duty Cycle Rating 115 Vac	Duty Cycle Rating 220 Vac	Current Ratings 115 VAC		Current Ratings 220 VAC	
						N.L.A.*	L.R.A.*	N.L.A.*	L.R.A.*
Sure 25-5	300 (34)	5 seconds/90° (6 seconds/90°)	2 seconds/90°	50% (1)	50% (1)	1.40	2.15	CF**	CF**
Sure 25-10	300 (34)	10 seconds/90° (12 seconds/90°)	2 seconds/90°	50% (2)	50% (2)	1.00	1.55	CF**	CF**
Sure 24-10	300 (34)	10 seconds/90° (12 seconds/90°)	2 seconds/90°	25% (1)	25% (1)	0.70	1.05	0.45	0.65
Sure 49-5	600 (68)	5 seconds/90° (6 seconds/90°)	2 seconds/90°	25% (1)	25% (1)	1.10	1.80	1.00	1.20
Sure 49-15	600 (68)	15 seconds/90° (18 seconds/90°)	2 seconds/90°	25% (1)	25% (1)	0.55	1.55	0.35	0.90
Sure 49-30	600 (68)	30 seconds/90° (35 seconds/90°)	2 seconds/90°	50% (2)	50% (2)	0.65	0.70	0.30	0.35
Sure 100-10	1200 (136)	10 seconds/90° (12 seconds/90°)	5 seconds/90° (max)†	25% (1)	25% (1)	1.90	2.90	0.90	1.35
Sure 100-30	1200 (136)	30 seconds/90° (35 seconds/90°)	7 seconds/90° (max)†	50% (2)	50% (2)	0.65	0.95	0.35	0.45

*(N.L.A.) - No Load Ampere

(L.R.A.) - Locked Rotor Ampere

(1) - Open/Close Service

(2) - Open/Close or Modulating Service

** (CF) - Consult Factory

† - Approximate, Based on Load

24 VAC

Model	Output Torque Inch Pounds (N.m)	Electrical Speed of Operation 60 Hz. (50 Hz.)	Spring Speed of Operation	Duty Cycle Rating 24 VAC	Current Ratings 24 VAC	
					N.L.A.*	L.R.A.*
Sure 49-30	600 (68)	30 seconds/90° (35 seconds/90°)	2 seconds/90°	25% (2)	4.50	5.00

12 and 24 VDC

Model	Output Torque Inch Pounds (N.m)	Electrical Speed of Operation 60 Hz. (50 Hz.)	Spring Speed of Operation	Duty Cycle Rating 115 VAC	Duty Cycle Rating 230 VAC	Current Ratings 12 VDC		Current Ratings 24 VDC	
						N.L.A.*	L.R.A.*	N.L.A.*	L.R.A.*
Sure 49-5	600 (68)	5 seconds/90° (6 seconds/90°)	2 seconds/90°	50% (1)	50% (1)	1.00	22.00	1.00	12.30

Limit Switches (Sure 24 and 25)

Standard: Two-single pole, double throw type (SPDT) with an option for 2 or 4 additional

Limit Switches (24 VDC Models)

Ratings: UL and CSA listed.
MIL-PRF-8805 Qualified Listing
25 amp at 277 VAC; 1 H.P. at 125 VAC;
2 H.P. at 250 VAC

Isolation Relays

To operate multiple actuators in parallel from a single signal requires isolating relays in the field wiring. Consult factory.

Limit Switches (Sure 49 and 100)

Standard: Four-single pole, double throw type (SPDT) with an option: for 2 additional Ratings: UL and CSA listed.

15 amp & 1/2 H.P. at 125 or 250 VAC;
1/2 amp at 125 VDC; 1/4 amp at 250 VDC;
Lamp Load - 5 amp at 120 VAC

Optional: All double pole, double throw type (DPDT).

Ratings: UL and CSA listed.
10 amp at 125/250 VAC (form ZZ);
1/2 H.P. at 125 VDC; 3/4 H.P. at 250 VAC

Heater

PTC (Positive Temperature Coefficient)
Heater Standard in all AC Voltage Models

Duty Cycle

The percentage of time the electric motor is energized vs. the time it is at rest, in reversing duty and with the actuator running at it's rated load - maximum published torque.

Standard Modulating Duty Rating

- 12 motor starts (corrections) per minute.
- At the rated duty cycle for that model.
- With the speed of operation a minimum of 15 seconds for 90° or slower.
- With positioning accuracy of (+/-) 1% of total span.

Industrial Products Group

RCS Actuators

16240 Port Northwest Drive

Houston, TX 77041

T: 832-590-2306

Toll Free: 1-800-945-9898

F: 713-849-2879



www.dresserngs.com