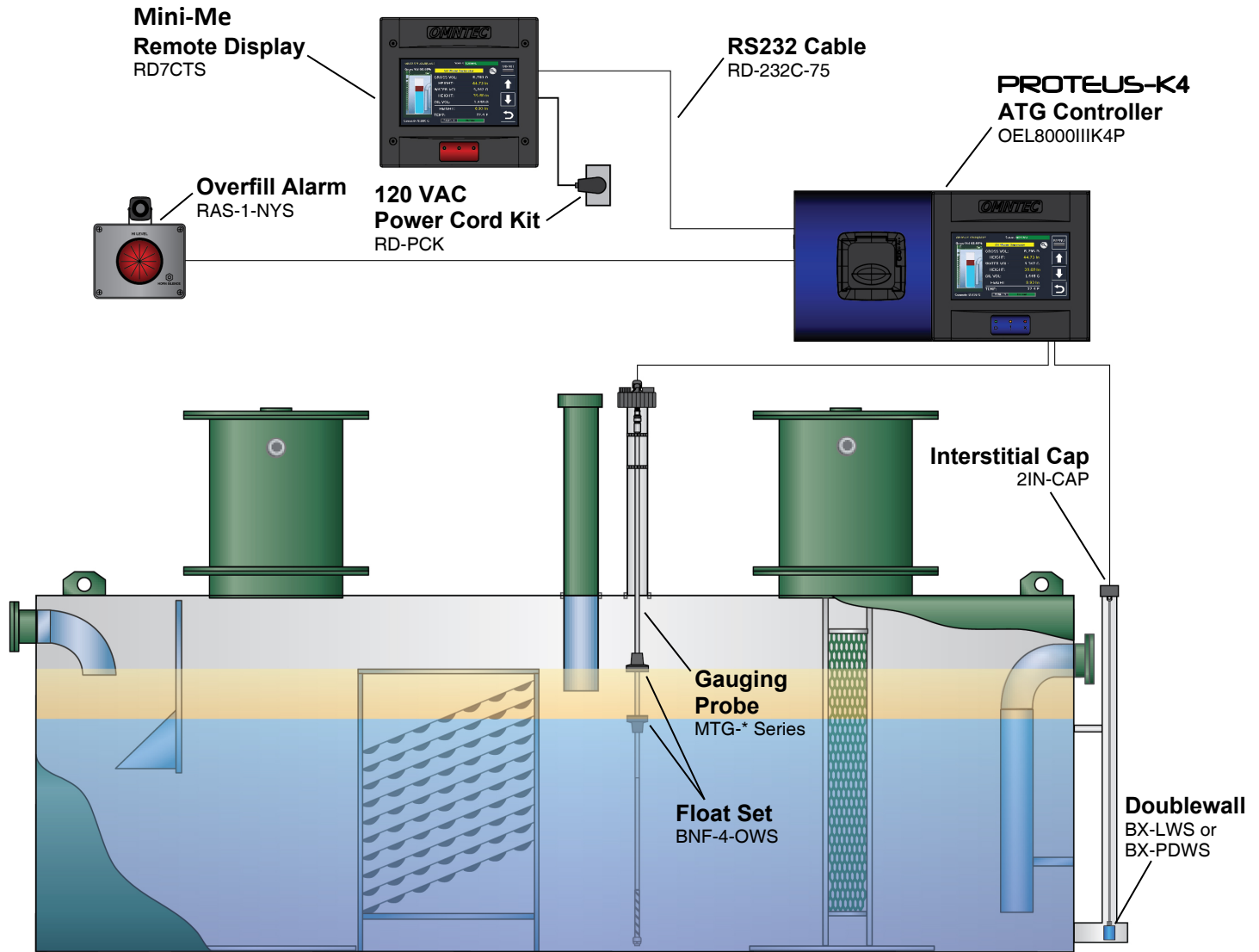


PROTEUS® K4 Basics (OWS)



OEL8000IIK4 System Parts List for OWS Tanks

OEL8000IIK4	PROTEUS® K4 Tank Gauging Controller with 7" color touch screen, (1) RS-232 port, & Ethernet. Accepts up to 4 MTG Series inventory probes and 16 BX Series leak sensors.
OEL8000IIK4P	(same as above but includes printer)
MTG-*	Magnetostrictive probe (*denotes probe length, price for up to 12 ft.). <i>Consult factory for alternate probes sizes and styles.</i>
BNF-4-OWS	4" Buna float set for oil water separator tanks
BX-LWS** BX-PDWS**	Sensor for monitoring the dry interstice of double-wall steel tanks. Comes with 25' of cable. (product distinguishing version) **For tanks less than 8' diameter, a BX-LS or BX-PDS can be used.
2IN-CAP	2" cap for interstitial sensor
RAS-1-NYS	Common overfill remote annunciator in Nema 4X enclosure, with acknowledgement switch, 100db horn, and high intensity strobe light.
Optional Accessories	
RD7CTS	PROTEUS® Mini-Me™ universal remote ATG monitor with 7" color touch screen display for audio/visual alarms and current inventory.
RD-232C-75	75 feet RS232 cable for use with RD7CTS remote display.
RD7CTS-485	PROTEUS® Mini-Me™ RS-485 universal remote ATG monitor with 7" color touch screen display for audio/visual alarms and current inventory. (requires DB-485 board)
DB-485	RS-485 board (required when using RD7CTS-485)
RD-PCK	120 VAC power cord kit for use with PROTEUS® remote displays.
C232-422-RD7CTS	RS-232-422 Booster Kit to increase distance of RS-232 output 3,000 feet for use with RD7CTS remote display (Includes 2 converters and 2 power transformers).
WRS-232	Wireless RS-232 link includes both tank gauge and remote transceivers.
WRS-232R	Wireless RS-232 repeater for extending WRS-232 wireless reach.

OMNTEC®