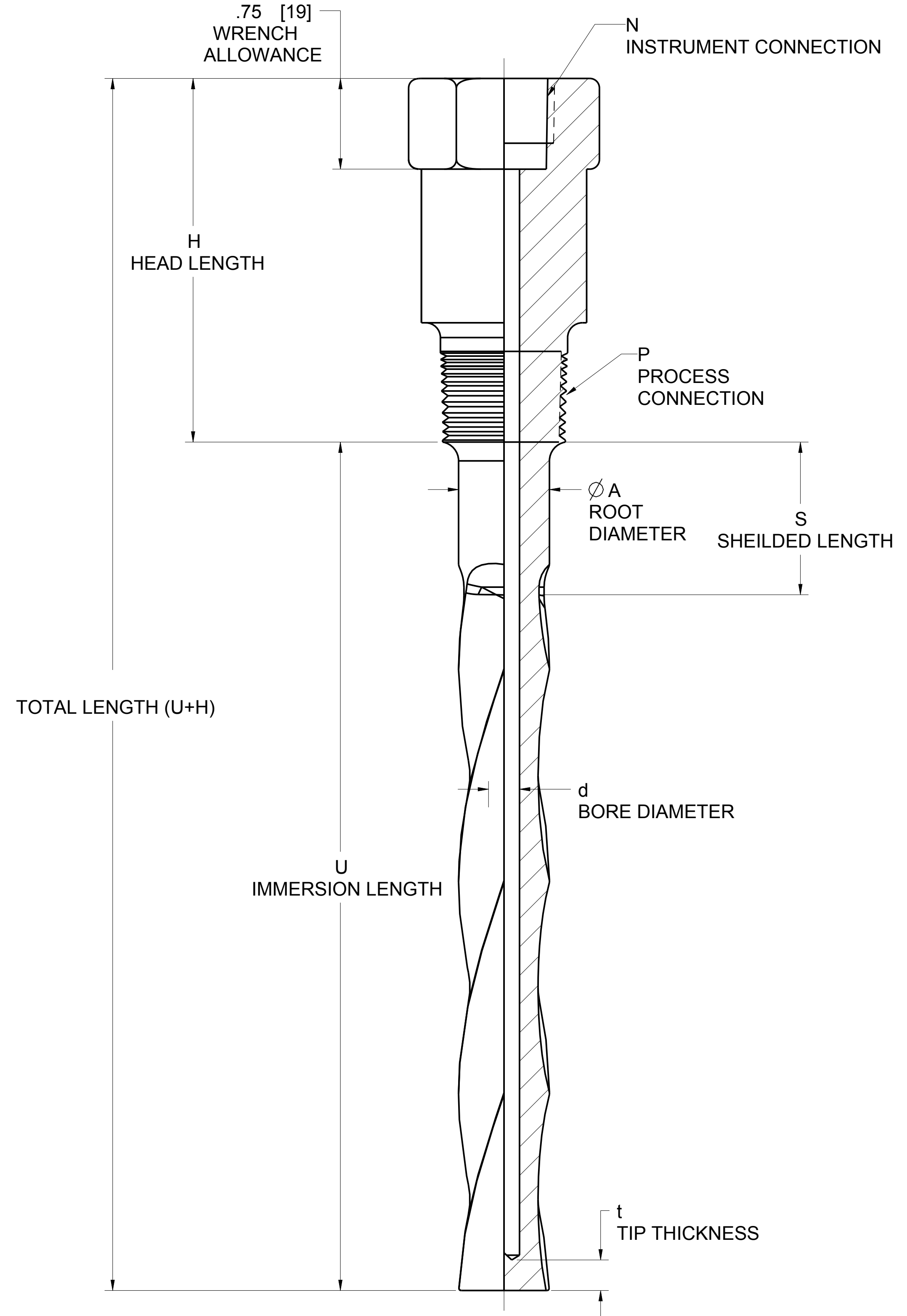


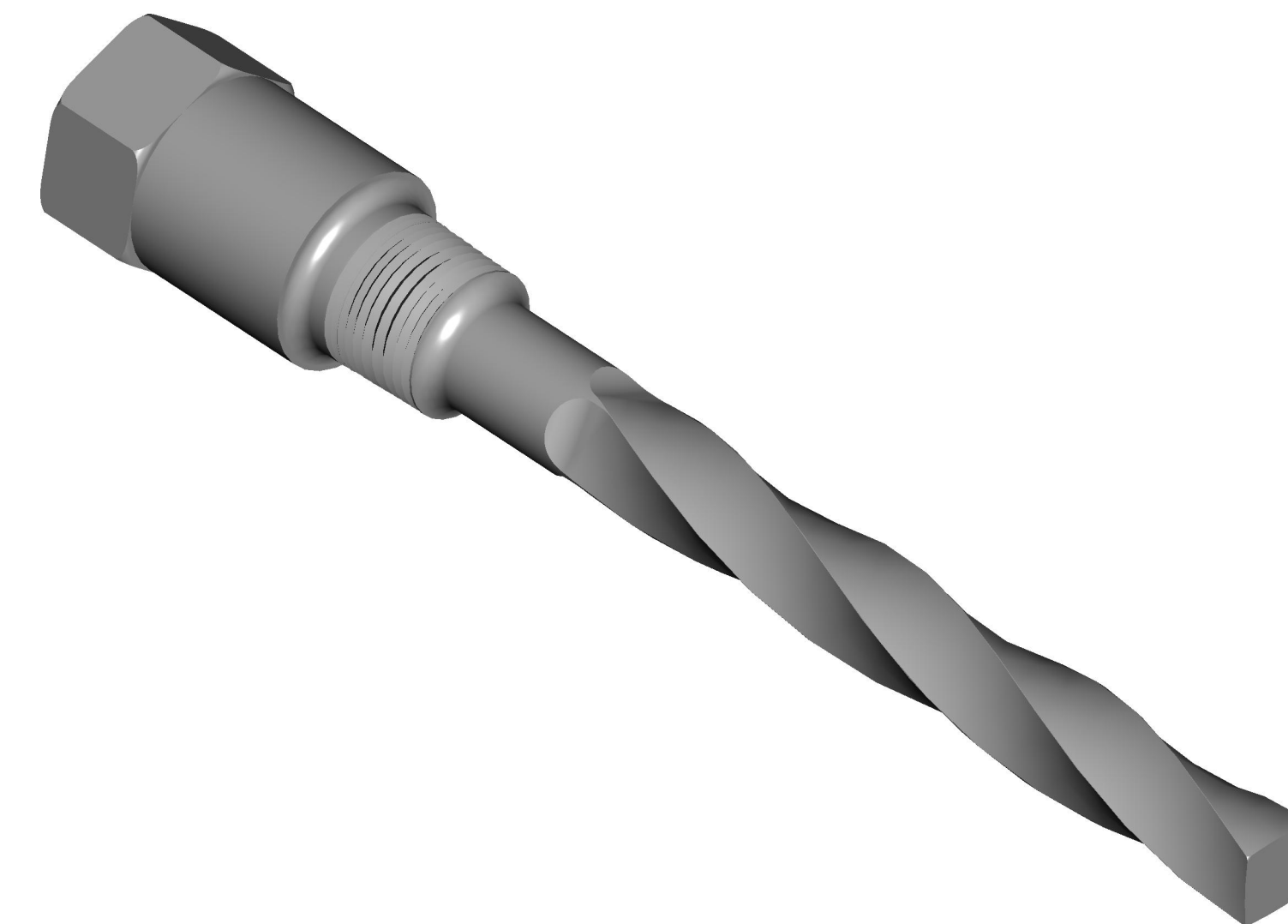
ROSEMOUNT TWISTED SQUARE BARSTOCK THERMOWELL

REVISION TABLE			
REVISION	ECO NO.	APP'D	DATE
AB	RTC1069399	J. REUVERS	11/16/17
DESCRIPTION			
UPDATE DIMS FOR THE FLANGE STYLE			



THREAD MOUNT THERMOWELLS (TAPERED THREAD)

CODE	MOUNTING STYLE		WRENCH FLAT SIZE "G"		THREAD SPECIFICATION
	T	THREADED	METRIC UNITS; CODE "M"	U.S. CUSTOMARY; CODE "E"	
AB	3/4-14 ANPT		1.18 [30]	1-1/8 [28.6]	ANPT PER SAE -AS71051 (REFERENCE PS-71)
AC	1-11.5 ANPT		1.34 [34]	1-1/4 [31.8]	
AD	1 1/2-11.5 ANPT		1.89 [48]	1-3/4 [44.5]	



TWISTED SQUARE

©2015 ROSEMOUNT INC.
ROSEMOUNT INC. CERTIFIES THIS DRAWING TO THE EXTENT OF THE INFORMATION PROVIDED IN ACCORDANCE WITH THE ROSEMOUNT ENGINEERING SPECIFICATIONS.
UNIT NOTES IN INCHES (mm).
REFERENCE ROSEMOUNT PRODUCT SPECIFICATIONS FOR PRODUCT SPECIFICATIONS.
CLICK HERE

3RD ANGLE SIZE D SCALE NTS

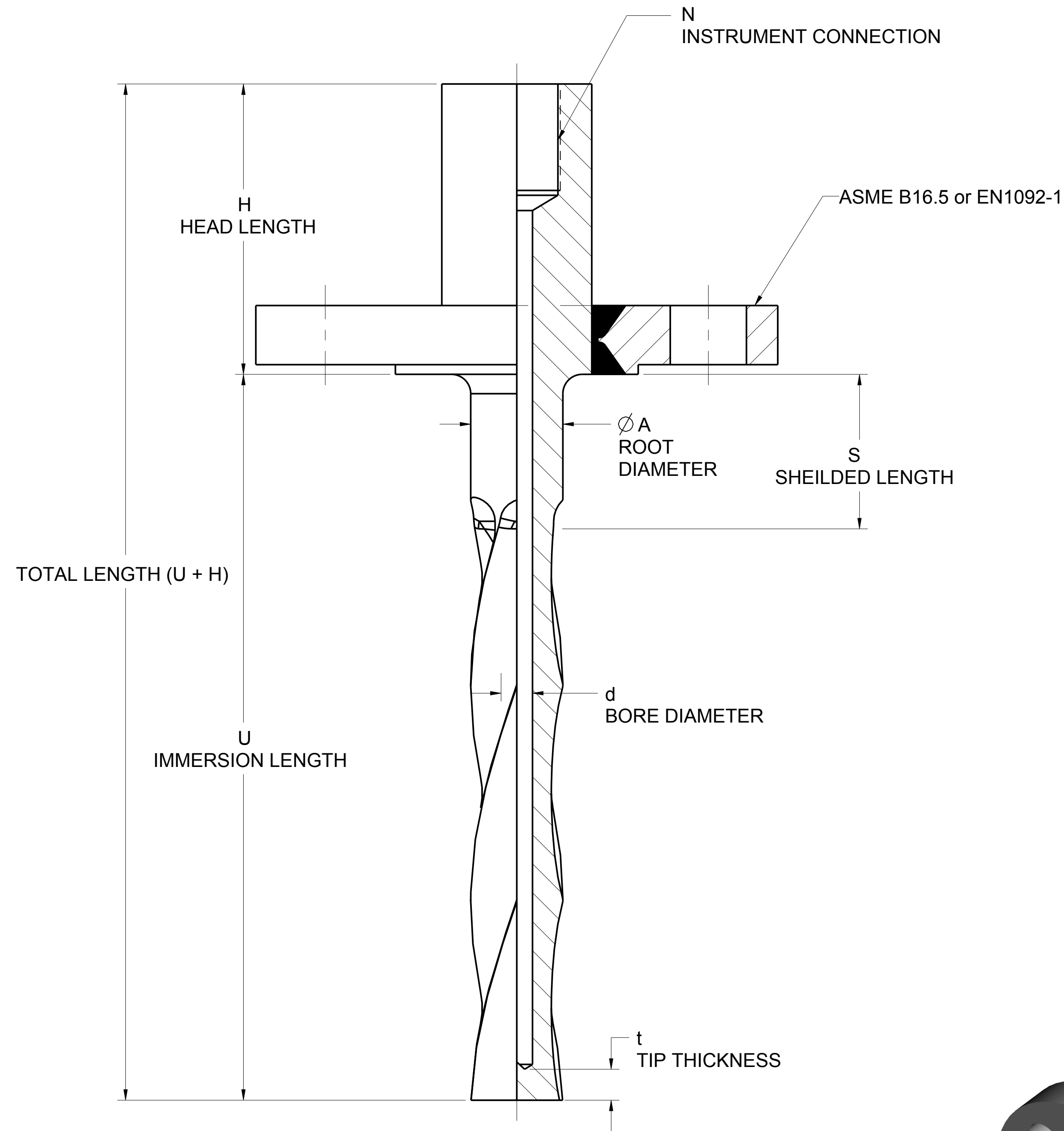
EMERSON

TITLE ROSEMOUNT THERMOWELLS TYPE I DRAWING

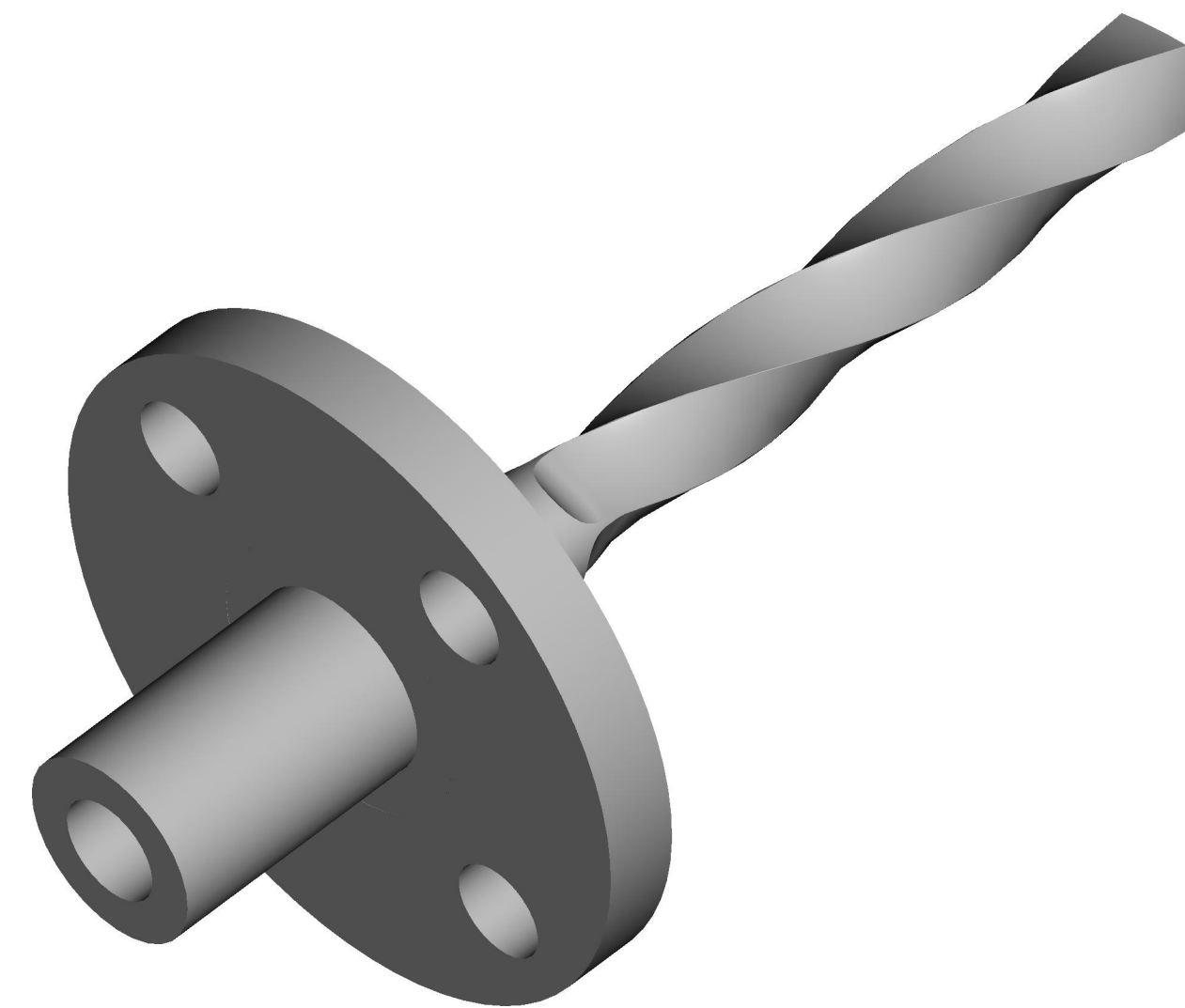
DR. J. ARMSTRONG 9/25/17 DRAWING NO. 00114-7002
APP'D J. REUVERS 9/25/17

CAD MAINTAINED, (PROE) SHEET 1 OF 4

ROSEMOUNT TWISTED SQUARE BARSTOCK THERMOWELL



TWISTED SQUARE



FLANGE MOUNT THERMOWELLS

CODE	CODE	MOUNTING STYLE	CODE	MOUNTING STYLE	ROOT DIAMETER	FLANGES PER SPECIFICATION
	P	FLANGE, PARTIAL PENETRATION WELD	F	FLANGE, FULL PENETRATION WELD	A	
	PROCESS CONNECTION					
AA	1" CLASS 150		1" CLASS 150		.75 (19)	ASME B16.5
AB	1 1/2" CLASS 150		1 1/2" CLASS 150		.75 (19)	
AC	2" CLASS 150		2" CLASS 150		.75 (19)	
AD	3" CLASS 150		3" CLASS 150		.75 (19)	
AE	4" CLASS 150		4" CLASS 150		.75 (19)	
AF	6" CLASS 150		6" CLASS 150		.75 (19)	
AG	3/4" CLASS 300		3/4" CLASS 300		.75 (19)	
AH	1" CLASS 300		1" CLASS 300		.75 (19)	
AJ	1 1/2" CLASS 300		1 1/2" CLASS 300		.75 (19)	
AK	2" CLASS 300		2" CLASS 300		.75 (19)	
AL	1" CLASS 400/600		1" CLASS 400/600		.75 (19)	
AM	1 1/2" CLASS 400/600		1 1/2" CLASS 400/600		.75 (19)	
AN	2" CLASS 400/600		2" CLASS 400/600		.75 (19)	

©2015 ROSEMOUNT INC.
ROSEMOUNT INC. CERTIFIES
THIS DRAWING IS MADE IN
ACCORDANCE WITH THE
ROSEMOUNT ENGINEERING
SPECIFICATIONS.
UNIT NOTES IN INCHES (mm).
REFERENCE ROSEMOUNT
PRODUCT SPECIFICATIONS.
CLICK HERE

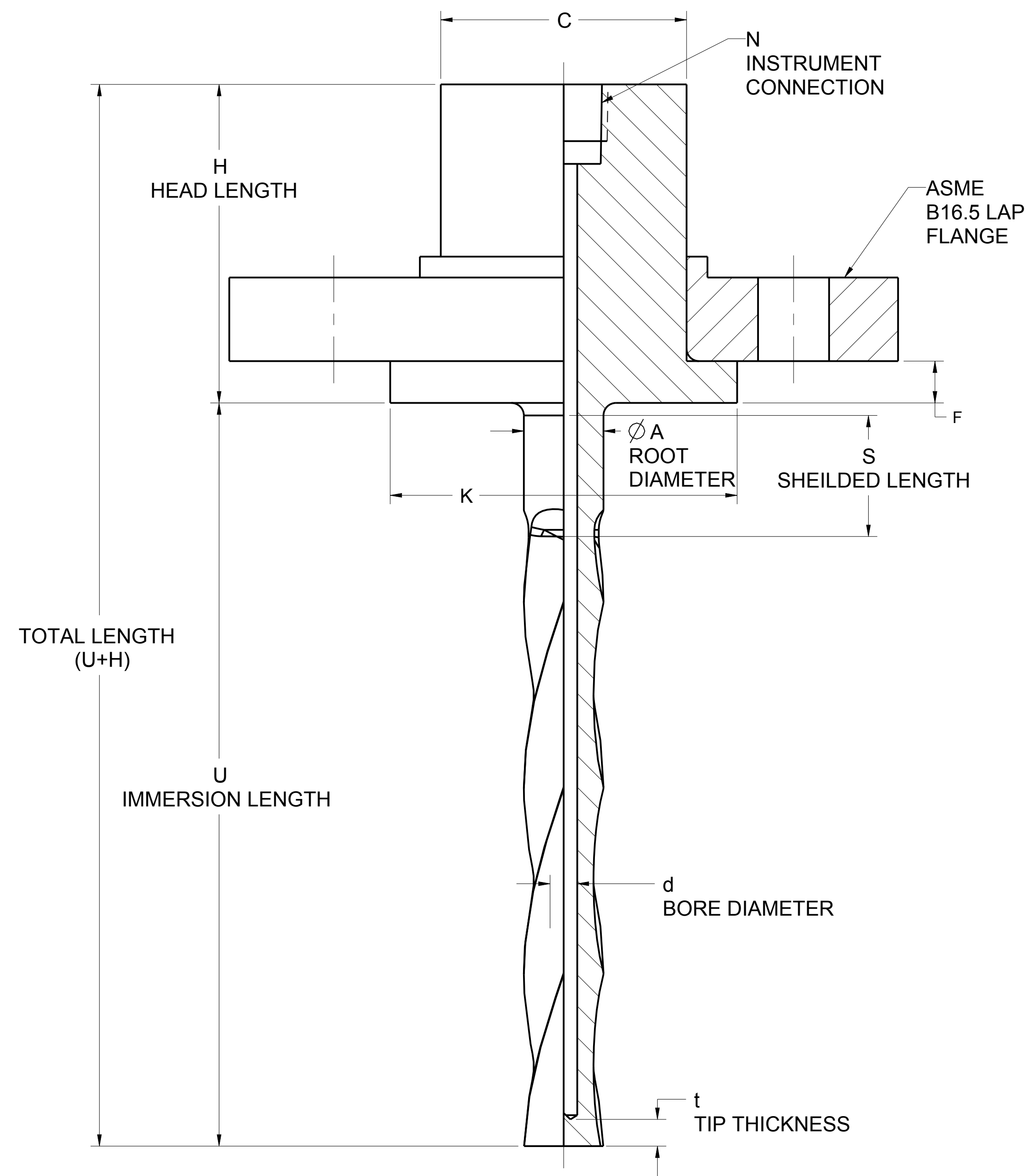
EMERSON

TITLE ROSEMOUNT THERMOWELLS
TYPE I DRAWING

DR. J. ARMSTRONG 6/6/17 DRAWING NO.
APP'D J. REUVERS 9/25/17 00114-7002

CAD MAINTAINED, (PROE) SHEET 2 OF 4

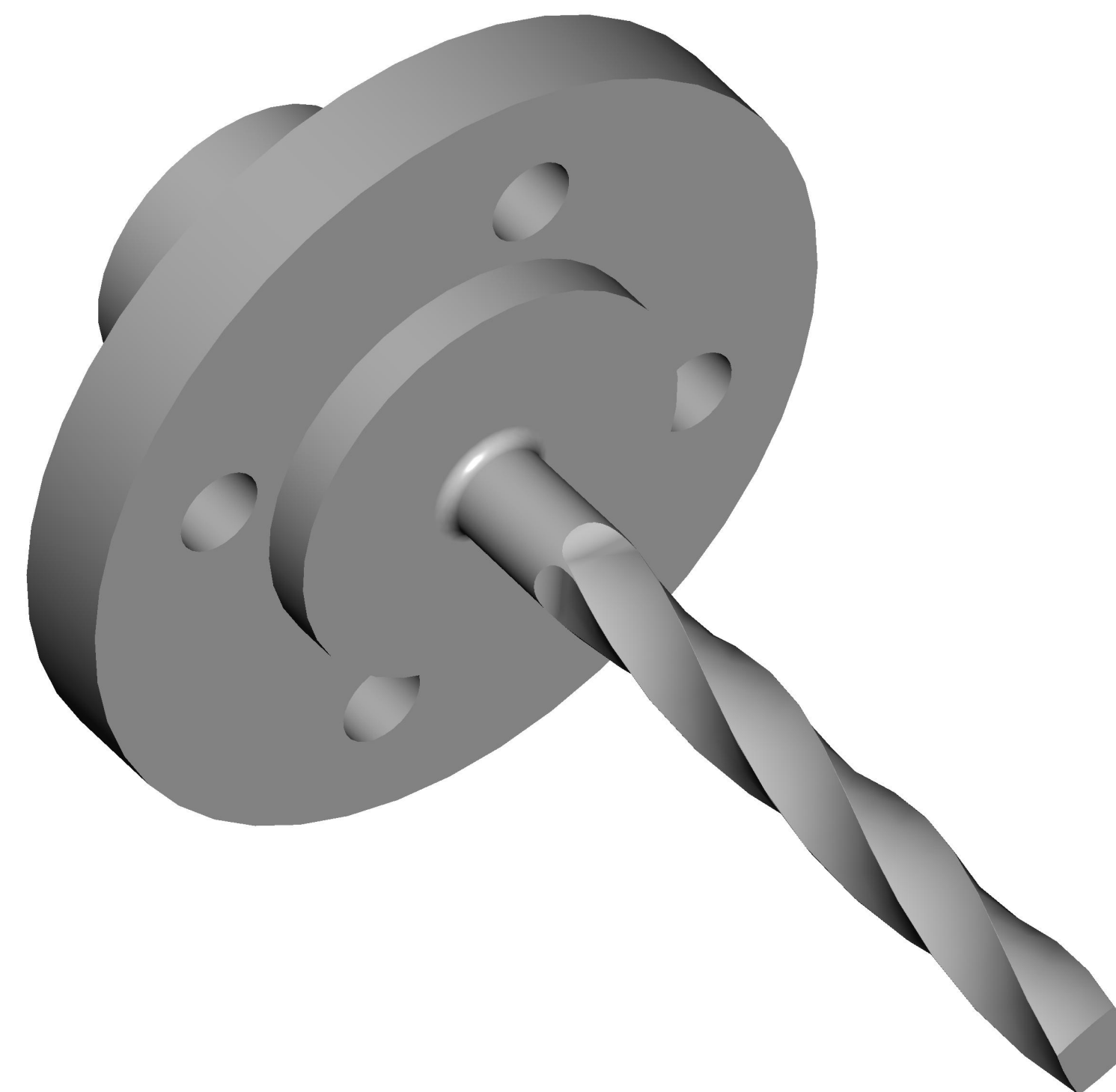
ROSEMOUNT TWISTED SQUARE BARSTOCK THERMOWELL



TWISTED SQUARE

VAN STONE/ LAP FLANGE THERMOWELLS

CODE	CODE	MOUNTING STYLE	LAGGING DIAMETER "Ø C"	STUB DIAMETER Ø K STANDARD RAISED FACE	STUB DIAMETER Ø K" RING TYPE JOINT OPTION R16	STUB THICKNESS "F" STANDARD RAISED FACE	STUB THICKNESS "F" RING TYPE JOINT OPTION R16
	V	VAN STONE , LAP FLANGE					
	PROCESS CONNECTION						
AA	1" CLASS 150		1.31 [33.4]	1.99 [50.8]	2.50 [63.5]	.394 [10]	.644 [16.35]
AB	1 1/2" CLASS 150		1.90 [48.3]	2.87 [73]	3.25 [82.5]		.644 [16.35]
AC	2" CLASS 150		2.37 [60.3]	3.62 [92.1]	4 [102]		.644 [16.35]
AH	1" CLASS 300		1.31 [33.4]	1.99 [50.8]	2.75 [70]		.644 [16.35]
AJ	1 1/2" CLASS 300		1.90 [48.3]	2.87 [73]	3.56 [90.5]		.644 [16.35]
AK	2" CLASS 300		2.37 [60.3]	3.62 [92.1]	4.25 [108]		.707 [17.92]
AL	1" CLASS 400/600		1.31 [33.4]	1.99 [50.8]	2.75 [70]		.644 [16.35]
AM	1 1/2" CLASS 400/600		1.90 [48.3]	2.87 [73]	3.56 [90.5]		.644 [16.35]
AN	2" CLASS 400/600		2.37 [60.3]	3.62 [92.1]	4.25 [108]		.707 [17.92]
AP	1" CLASS 900/1500		1.31 [33.4]	1.99 [50.8]	2.81 [71.5]		.644 [16.35]
AQ	1 1/2" CLASS 900/1500		1.90 [48.3]	2.87 [73]	3.62 [92]		.644 [16.35]
AR	2" CLASS 900/1500		2.37 [60.3]	3.62 [92.1]	4.88 [124]		.707 [17.92]
AS	1" CLASS 2500		1.31 [33.4]	1.99 [50.8]	3.25 [82.5]		.644 [16.35]
AT	1 1/2" CLASS 2500		1.90 [48.3]	2.87 [73]	4.50 [114]		.707 [17.92]
AU	2" CLASS 2500		2.37 [60.3]	3.62 [92.1]	5.25 [133]		.707 [17.92]



©2015 ROSEMOUNT INC.
ROSEMOUNT INC. CERTIFIES
THIS DRAWING IS MADE IN
ACCORDANCE WITH
ROSEMOUNT ENGINEERING
SPECIFICATIONS.
UNIT NOTES IN INCHES (mm).
REFERENCE ROSEMOUNT
PRODUCT SPECIFICATIONS.
CLICK HERE

3RD ANGLE

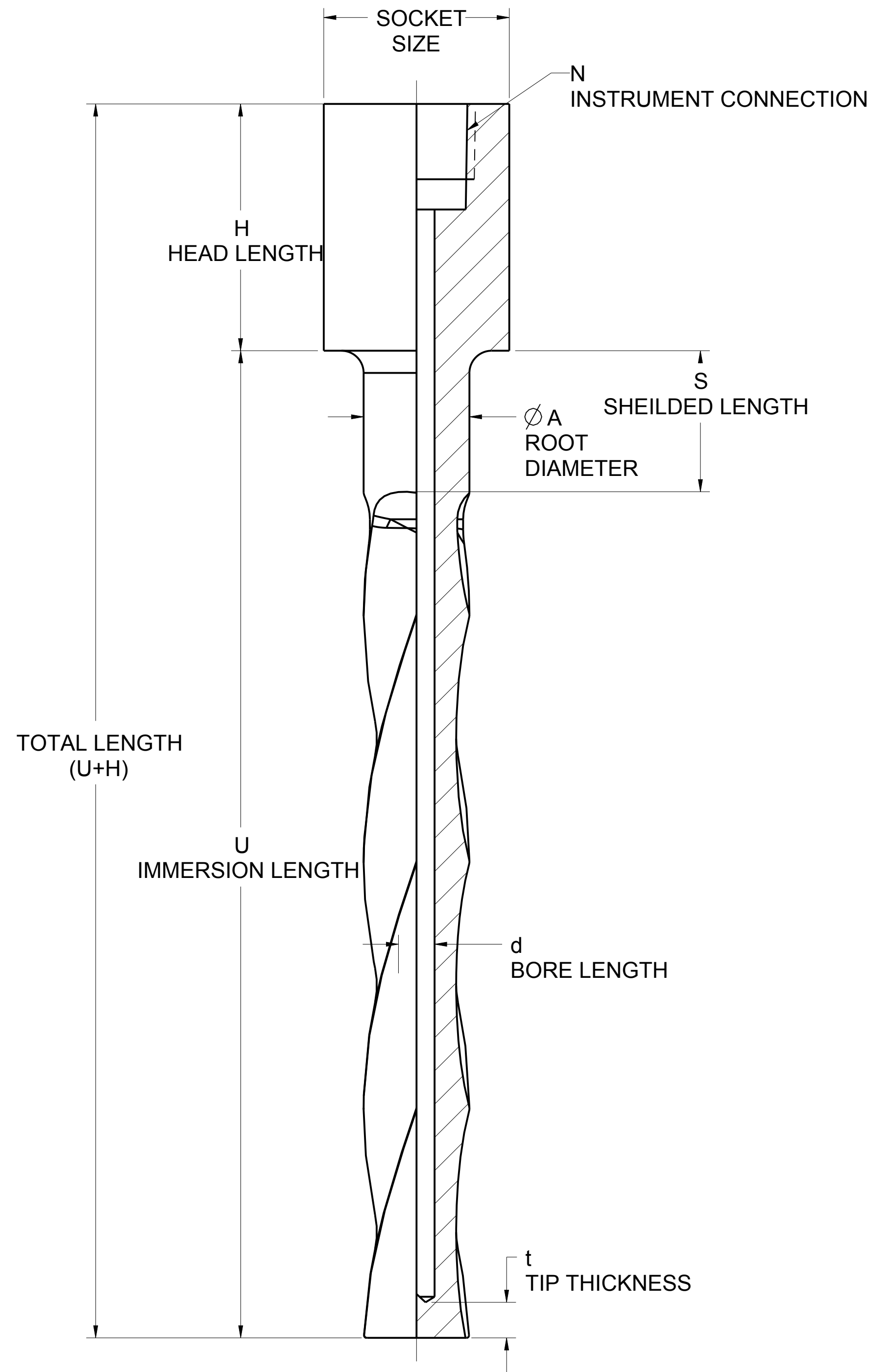
EMERSON

TITLE ROSEMOUNT THERMOWELLS
TYPE I DRAWING

DR. J. ARMSTRONG 6/6/17 DRAWING NO.
APPD J. REUVERS 9/25/17 00114-7002

CAD MAINTAINED, (PROE) SHEET 3 OF 4

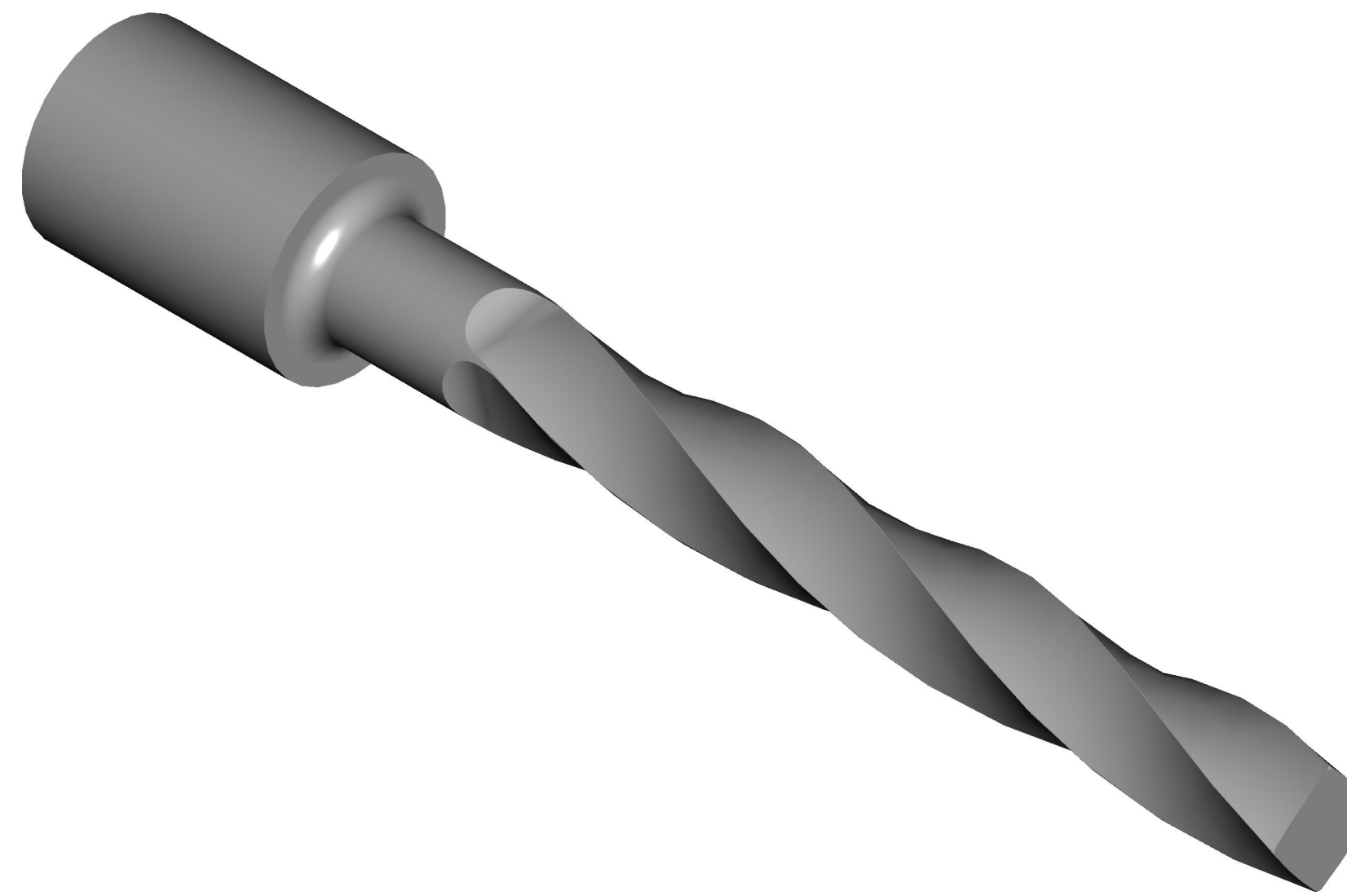
ROSEMOUNT TWISTED SQUARE BARSTOCK THERMOWELL



TWISTED SQUARE

WELD MOUNT THERMOWELLS - SOCKET WELD

CODE	MOUNTING STYLE		SOCKET SIZE "Ø S"
	W	WELDED	
AA	3/4" PIPE		1.05 [26.67]
AB	1" PIPE		1.32 [33.40]
AC	1 1/4" PIPE		1.66 [42.16]
AD	1 1/2" PIPE		1.90 [48.26]



©2015 ROSEMOUNT INC.
ROSEMOUNT INC. CERTIFIES
THIS DRAWING IS MADE
IN ACCORDANCE WITH
ROSEMOUNT ENGINEERING
SPECIFICATIONS.
UNIT NOTES IN INCHES (mm).
REFERENCE ROSEMOUNT
PRODUCT SPECIFICATIONS.
CLICK HERE

3RD ANGLE

EMERSON

TITLE ROSEMOUNT THERMOWELLS
TYPE I DRAWING

DR. J. ARMSTRONG 6/6/17 DRAWING NO. 00114-7002
APP'D J. REUVERS 9/25/17

CAD MAINTAINED, (PROE) SHEET 4 OF 4