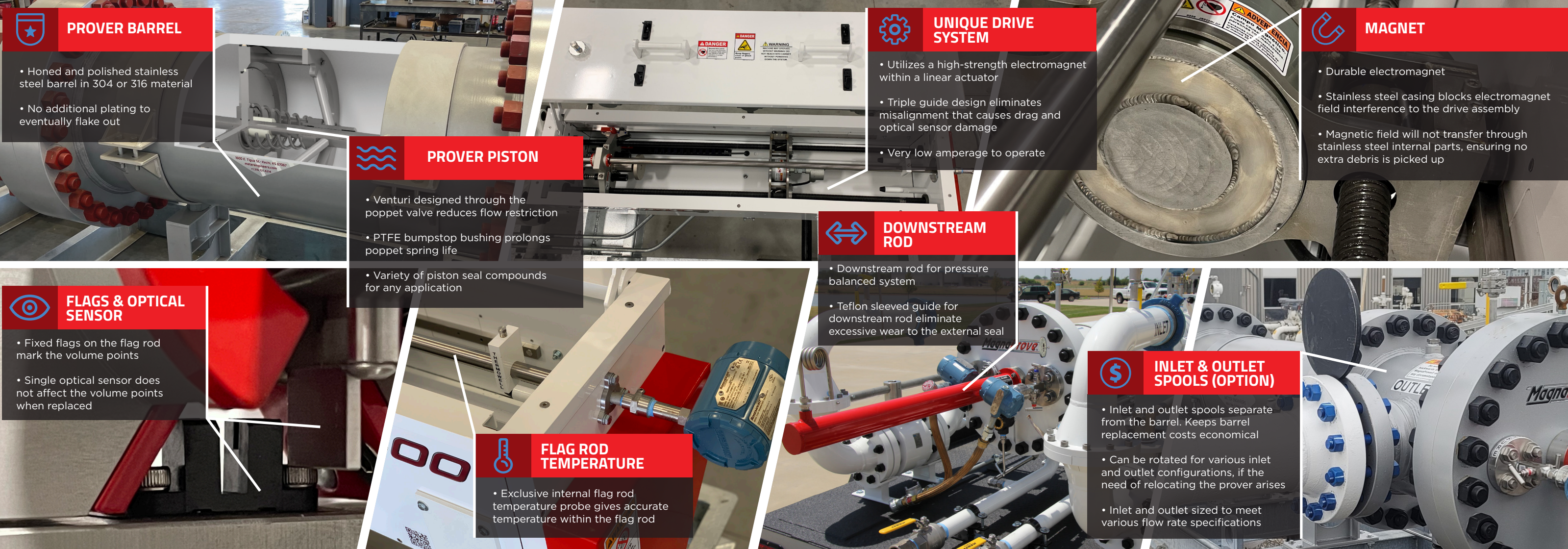


MagnaProve[®]

The Future of Small Volume Prover Technology





PROVER BARREL

- Honed and polished stainless steel barrel in 304 or 316 material
- No additional plating to eventually flake out

UNIQUE DRIVE SYSTEM

- Utilizes a high-strength electromagnet within a linear actuator
- Triple guide design eliminates misalignment that causes drag and optical sensor damage
- Very low amperage to operate

MAGNET

- Durable electromagnet
- Stainless steel casing blocks electromagnet field interference to the drive assembly
- Magnetic field will not transfer through stainless steel internal parts, ensuring no extra debris is picked up

PROVER PISTON

- Venturi designed through the poppet valve reduces flow restriction
- PTFE bumpstop bushing prolongs poppet spring life
- Variety of piston seal compounds for any application

DOWNSTREAM ROD

- Downstream rod for pressure balanced system
- Teflon sleeved guide for downstream rod eliminate excessive wear to the external seal

FLAGS & OPTICAL SENSOR

- Fixed flags on the flag rod mark the volume points
- Single optical sensor does not affect the volume points when replaced

INLET & OUTLET SPOOLS (OPTION)

- Inlet and outlet spools separate from the barrel. Keeps barrel replacement costs economical
- Can be rotated for various inlet and outlet configurations, if the need of relocating the prover arises
- Inlet and outlet sized to meet various flow rate specifications

FLAG ROD TEMPERATURE

- Exclusive internal flag rod temperature probe gives accurate temperature within the flag rod

YOUR BOTTOM LINE DEPENDS ON EVERY DROP

Accuracy is not a want or a need. It's an expectation. For the petroleum industry, a small metering error can create an enormous dent in profits. With the new MagnaProve®, accuracy and dependability contribute to a healthy bottom line. This product is designed for precision and durability, while remaining flexible and versatile for a wide range of metering sites and applications. When you need a portable or stationary solution that delivers accuracy, choose the MagnaProve® – the dependable, user friendly and economical compact prover.

PROFITABILITY MEETS CONVENIENCE

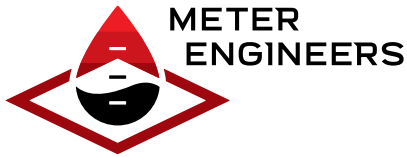
The ability to implement the right equipment for challenging applications without any holdups makes good productive sense. The all new MagnaProve® redefines in-the-field ease with its patented drive design utilizing an electromagnet on a linear actuator, which in a portable application can be powered by a small on-board inverter, eliminating trip hazards and saving valuable time from dragging high voltage power cords. Why exhaust valuable uptime when the MagnaProve® is always ready to go?

THE POWER OF ATTRACTION

Why the magnet? It was the lure of building a better product. The world needed a prover with superior flow rate turndown, faster cycle times and improved system durability. From these aspirations, we developed the MagnaProve®, the only meter prover to utilize the power of the magnet. This proprietary electromagnet design with a linear actuator gathers its performance by releasing the piston from the magnet, which removes drag from proving runs, drastically boosts efficiency and proving cycle times. In fact, the linear actuator provides prover readings in as little as 5 second intervals, depending on the flow rate. Equally important, the magnetic field does not transfer through the stainless steel internal parts. This ensures no extra debris is picked up that would affect the accuracy of proving runs. Additionally, the stainless steel casing prevents electromagnetic field interference to the system, allowing the magnet and piston to perform their duties unencumbered. All things considered, who wouldn't be attracted to a prover that delivers this level of system certainty?

AVAILABLE OPTIONS

- Pressure and Temperature Sensors
- Pycnometer Connections
- PhantomProve Diagnostic
- Stationary or Portable Configurations
- Custom Trailers and Truck Beds
- Prover Vent Box and Sump Tank
- High and Low-Pressure Hoses
- High-Pressure Load Arms
- Software Package
- Auto Seal Check
- Inlet & Outlet Spools
- Densitometer

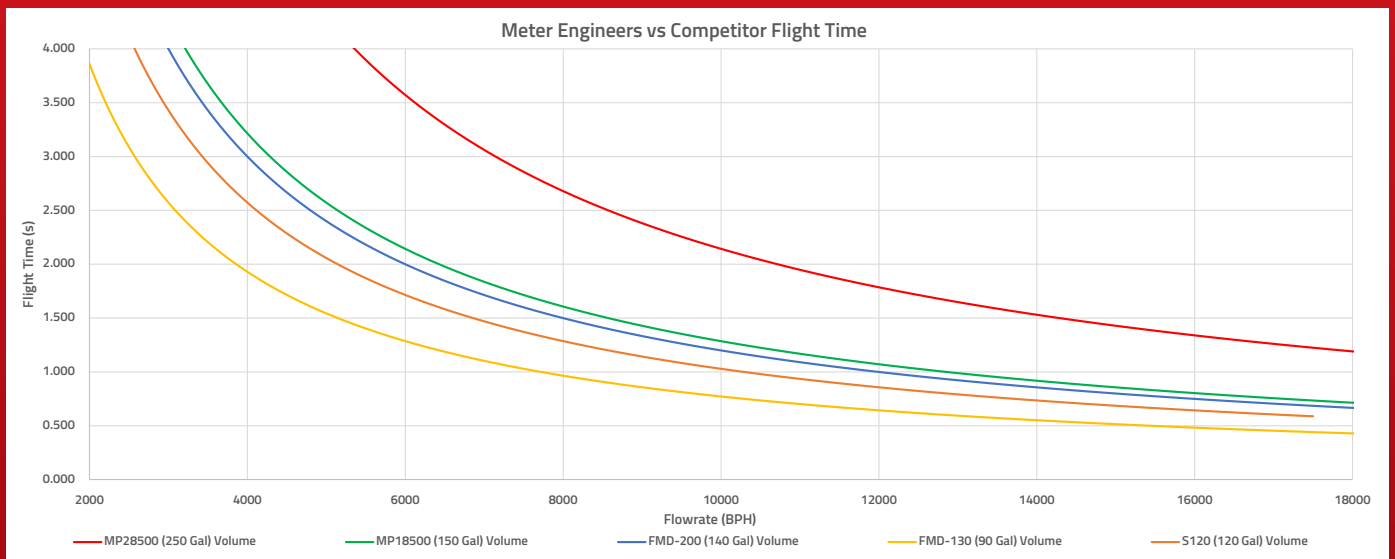


1.800.424.7956
+1.316.721.4214

MODEL SPECIFICATIONS

MODEL NUMBER	SIZE (O.D.)	DISPLACED VOLUME (GAL)	MAX FLOW RATE (BPH)	1 SECOND FLIGHT TIME MAX FLOW RATE (BPH)	STD. I/O SIZE
MP1050	8"	5	1,050	437	3"
MP1300	14"	10	1,300	857	3"
MP2600	14"	15	2,600	1,286	4"
MP4500	18"	30	4,500	2,571	6"
MP5355	20"	35	5,355	3,000	8"
MP8500	25"	65	8,500	5,571	10"
MP12750	29.5"	100	12,750	8,571	12"
MP18500	36"	150	18,500	12,857	16"
MP28500	46"	250	28,500	21,429	20"

COMPARISON



SCAN THE QR CODE TO VISIT OUR WEBSITE FOR MORE INFORMATION

