

CC-3627-V03

H30035M, BALL, STN. STL, (57) REQ'D.

H-9431-RP THRUST RING, NYLON

H-9428-M SET SCREW, STEEL-CAD. PLT.

H-9429-M BEARING, P.T.F.E LINED

H-9432-M O-RING, BUNA-N

H-9430-M BEARING, P.T.F.E LINED

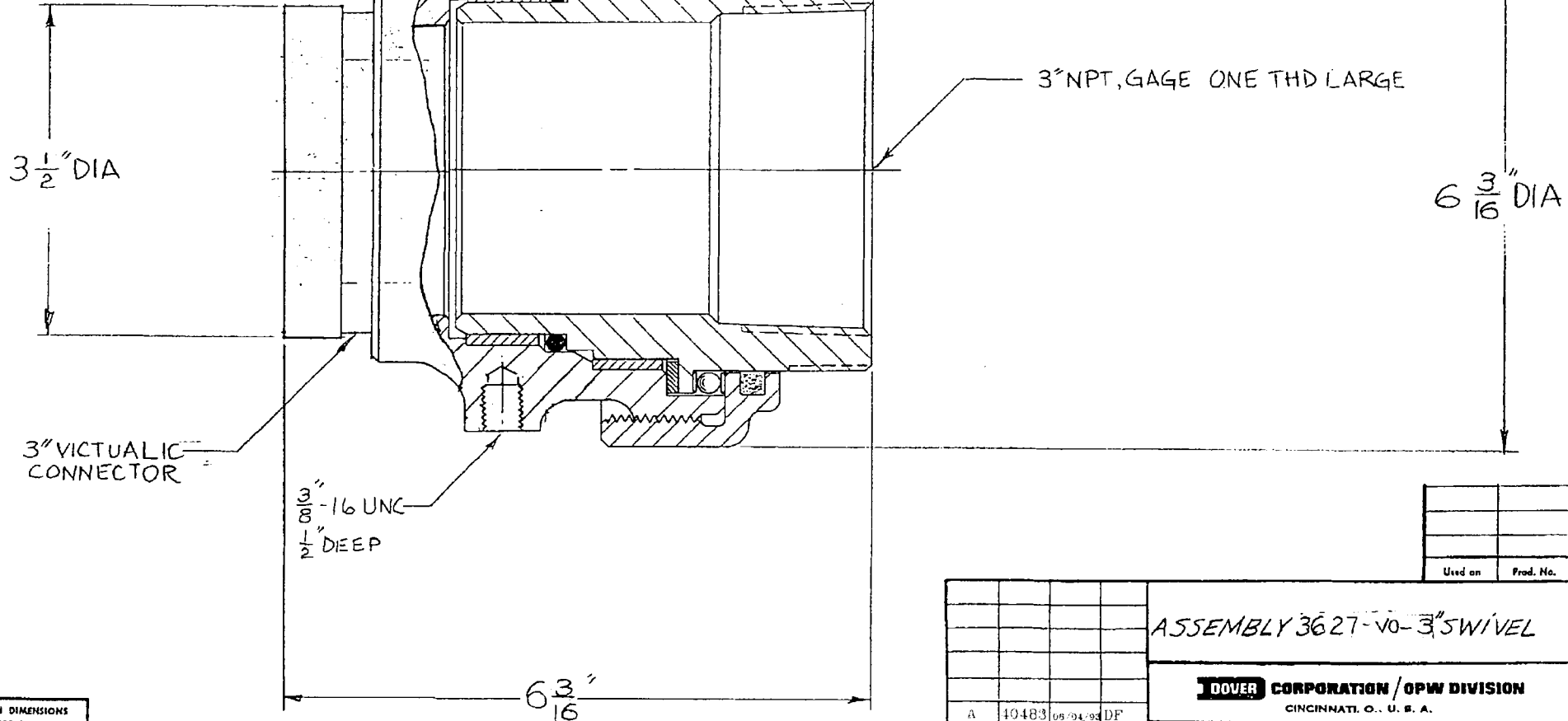
C-20041-A BODY, CAST ALUM

H-9426-M WEAR RING, STEEL (2) REQ'D.

H-9427-F DUST SEAL, FELT

C-2984-AH RETAINER, ALUM.-HARDCOAT

C-2985-AH TAIL, ALUM.-HARDCOAT-TEFLON IMPREG.



TOLERANCE ON DIMENSIONS
NOT OTHERWISE SPECIFIED
DECIMAL ± .005"
MACHINE FRACTIONAL ± 1/64"
ROUGH CASTING ± 1/32"
ANGLE ± 1/2°

ZEN-CINCINNATI, OHIO

Used on	Prod. No.

ASSEMBLY 3627-V0-3" SWIVEL			
DOVER CORPORATION / OPW DIVISION CINCINNATI, O., U. S. A.			
A	40483	05/04/95	DF
REL.	40109	11/30/95	TJJ
Letter	En. No.	Date	Drawn
CHANCE			
DRAWN BY: RWILLIGER		SCALE: NONE	
TRACED BY: [Signature]		DATE: 1/23/95	
CHECKED BY: [Signature]		APPROVED BY: [Signature]	
DRAWING No. CC3627V03			