



INSTALLATION, OPERATION & MAINTENANCE INSTRUCTIONS

1455 Kleppe Lane ♦ Sparks, NV 89431-6467 ♦ (775) 359-4712 ♦ Fax (775) 359-7424
E-mail: haws@hawsco.com ♦ website: www.hawsco.com

No. 0002080243 (11)

Model 9400/9400LPS

NOTE TO INSTALLER: Please leave this information with the Maintenance Department.

LIMITED WARRANTY

HAWS warrants that all of its products are guaranteed against defective material or poor workmanship for a period of **two years from the date of shipment**. The foregoing notwithstanding, *HAWS* warrants certain specific products or components thereof for an adjusted period. A list of these excepted products and components and a description of their respective warranty terms may be found here:

www.hawsco.com/warranty. *HAWS*' liability under this warranty shall be discharged by furnishing without charge F.O.B. *HAWS* factory any goods, or part thereof, which shall appear to the Company upon inspection to be of defective material or not of first-class workmanship, provided that a claim is made in writing to Company within a reasonable period after receipt of the product. Where claims for defects are made, the defective part or parts shall be delivered to the Company, prepaid, for inspection. *HAWS* shall not be liable for the cost of repairs, alterations or replacements, or the labor required to implement them, or for any expense connected therewith made by the owner or owner's agents, except upon written authority from *HAWS*. *HAWS* shall not be liable for any damages caused by defective materials or poor workmanship, except for replacements, as provided above. Buyer agrees that *HAWS* has made no other warranties either express or implied in addition to those above stated, except that of title with respect to any of the products or equipment sold hereunder and that *HAWS* shall not be liable for general, special, incidental, or consequential damages claimed to arise under the contract of sale.

Equipment manufactured by *HAWS* is warranted to function if installation and maintenance instructions provided are adhered to. The units also must be used for the purpose for which they were intended. Any *HAWS* emergency equipment is intended to supplement first-aid treatment. Due to widely varying conditions, *HAWS* cannot guarantee that the use of this emergency equipment will prevent serious injury or the aggravation of existing or prior injuries.

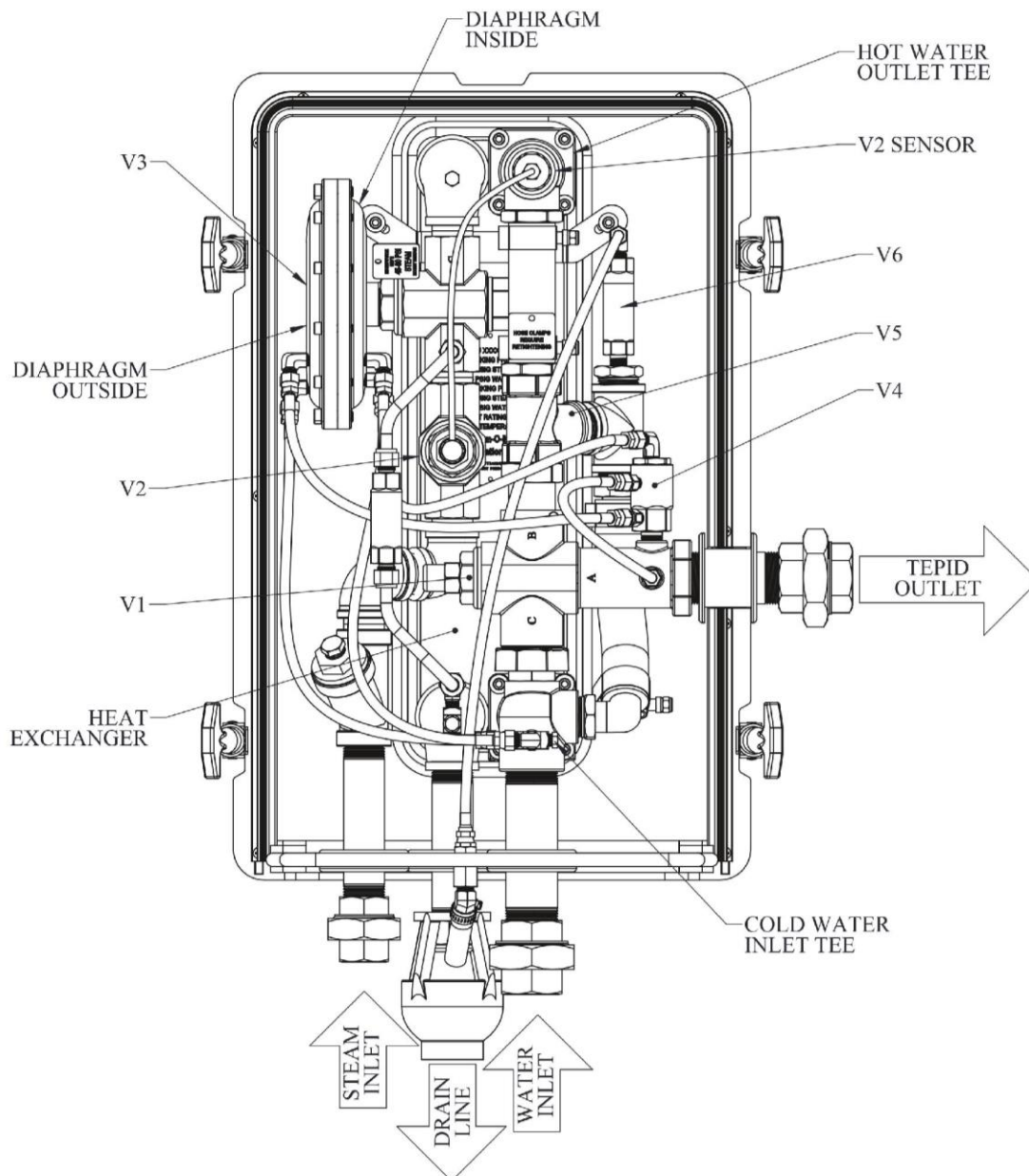
EXCEPT AS EXPRESSLY STATED HEREIN, HAWS HEREBY DISCLAIMS ALL WARRANTIES, WHETHER EXPRESS OR IMPLIED, ARISING BY LAW OR OTHERWISE, INCLUDING WITHOUT LIMITATION, ANY IMPLIED WARRANTIES OF MERCHANTABILITY AND FITNESS FOR A PARTICULAR PURPOSE. THIS WARRANTY MAY NOT BE MODIFIED OR EXTENDED WITHOUT THE WRITTEN CONSENT OF HAWS. REMEDIES AND REPLACEMENTS STATED HEREIN ARE EXCLUSIVE. IN NO EVENT SHALL HAWS BE LIABLE FOR ANY SPECIAL, PUNITIVE, CONSEQUENTIAL OR INCIDENTAL DAMAGES TO ANY PERSON INCLUDING BUT NOT LIMITED TO DAMAGES FOR LOSS OF USE OR PROFITS, SUBSTITUTE PRODUCTS OR COSTS, PROPERTY DAMAGE, OR OTHER MONETARY LOSS.

SHOULD YOU EXPERIENCE DIFFICULTY WITH THE INSTALLATION OF THIS MODEL PLEASE CALL:

TECHNICAL SUPPORT: 1-800-766-5612
FOR CUSTOMER SERVICE: 1-888-640-4297

MODEL 9400/9400LPS MIXING SYSTEM

INSTALLATION & TESTING MANUAL



*****CAUTION:** Do not lift by yellow enclosure.
Reference installation instructions for proper lifting and moving techniques.

*** CAUTION ***

IMPROPER INSTALLATION MAY RESULT IN RISK OF SCALDING

PRE-INSTALLATION:

Mounting: Always use back-up wrench when connecting to the AXION[®] Steam Water Heater station. Do not allow rotation of any piping while connecting steam and water lines. Rotation of piping in or on station may cause **damage** and **malfunction**.

Piping & Connections: Freeze and scald protection valves **MUST** be installed as per industry standards on the station's inlet water supply line and outlet line to the connected safety fixture.

If heat tracing is applied to the water supply line, the freeze protection valve may be installed as backup protection. Heat tracing on inlet water piping **must** be regulated to maintain water temperature below 85°F. Depending on system piping layout, additional freeze and over-temperature protection valves may be required.

Compliance: This station complies with the ANSI Z358.1 standard and mixing valve is designed to meet ASSE 1071 (American Society of Sanitary Engineers for Temperature Actuated Mixing valves for Plumbed Emergency Equipment) requirements.

INSTALLATION:

Air Gap: During operation the station's drain line discharges steam condensate, water, and some flash steam vapors. The drain line is equipped with an air gap to prevent obstruction of the drain.

The drain line must be **unobstructed** and **free-flowing** for the unit to operate correctly. No steam trap should be used on this line; the addition of a steam trap or restriction may result in a scalding hazard. The drain line must be piped so that there is no back-pressure restriction. Do not tie other drain lines into drainpipe.

In applications where air gap is removed - plumb piping directly to the drain line and replace air gap at the end of piping **AT MOST** 10 feet from the station. Drain line piping must be **steeply sloped** to ensure proper drainage. If collecting drained water for reuse, do not submerge or block the drain line.

POST INSTALL TESTING:

Testing: ANSI Z358.1 standards mandate testing the AXION[®] Steam Water Heater's operation and outlet temperature weekly to validate unit functionality and tepid water availability. Refer to the **Testing Checklist** (included - page 7) for complete testing instructions.

MODEL 9400/9400LPS MIXING SYSTEM

INSTALLATION CHECKLIST

STEP 1: REMOVE FROM BOX

Remove Haws 9400/9400LPS from box by having two people lift from underneath the enclosure.
***Do not stand unit up, lay flat until ready to install

STEP 2: HANDLING

Haws 9400/9400LPS should only be grasped by the inlet and outlet piping while mounting. Consider removing front cover to allow for easy access to hand holds.

STEP 3: MOUNTING

Mount the unit by its inlet and outlet piping with steam inlet, condensate outlet, and cold water inlet directed downward with adequate space on all sides. (Reference installation schematic below.) Adhere to your plant's guidelines for mounting the unit to plant piping.

STEP 4

After the unit has been installed and all pipe fittings tightened, open the cold water supply valve.

STEP 5

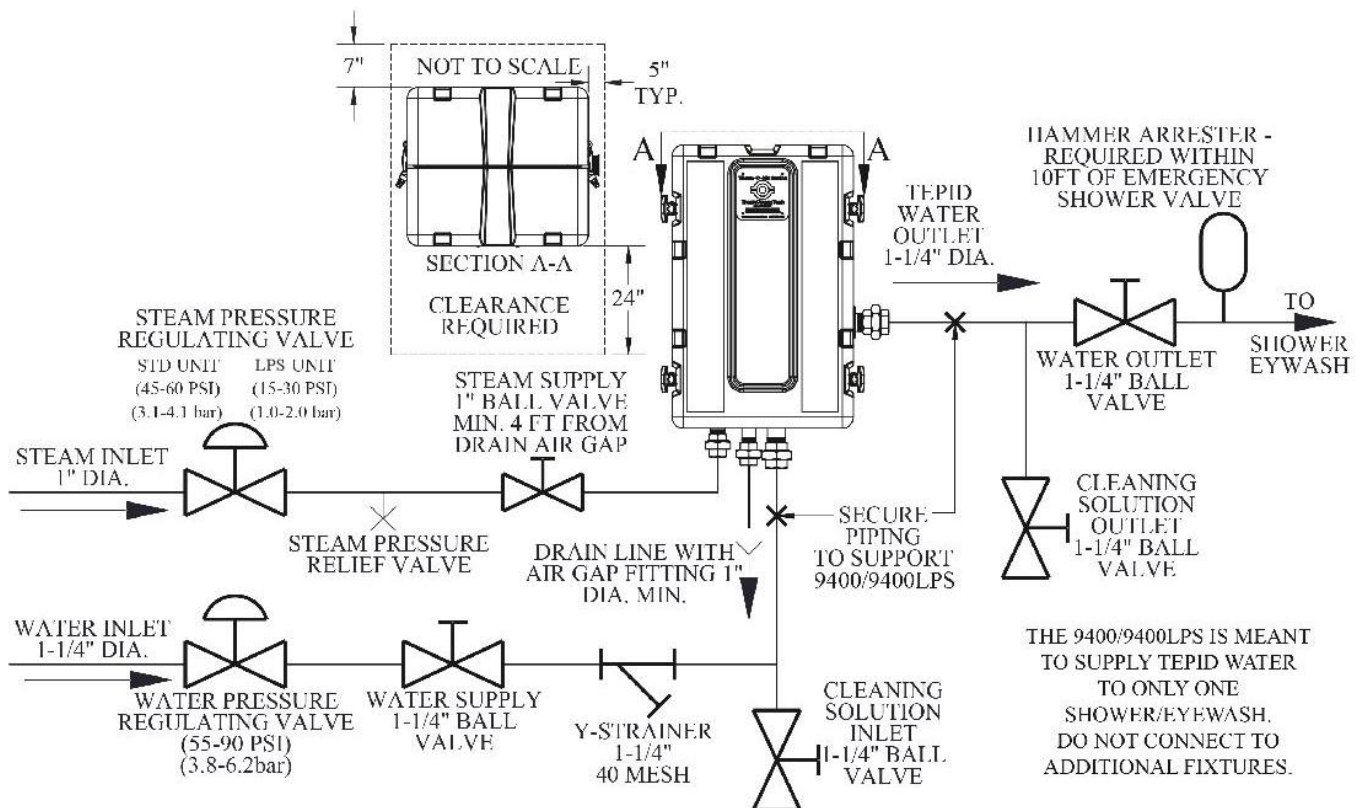
Open the shower valve to flow water through the unit. Once a constant flow has been established, slowly open the steam inlet supply valve.

STEP 6

Use a thermometer to check the tepid water outlet temperature. Output temperature should be about 82°F (+/-5°F) from both shower and eyewash stations.

STEP 7

Proceed to testing checklist.



MODEL 9400/9400LPS MIXING SYSTEM

INSTALLATION INSTRUCTIONS

REMEMBER: CONSULT WITH HAWS APPLICATION ENGINEERS FOR ANY QUESTIONS REGARDING INSTALLATION, OPERATION, OR MAINTENANCE.

CAPACITY: The 9400/9400LPS produces up to 25 GPM (94.6 L/min) of 80°F (26.7°C) water for one shower/eyewash combination. At that flow, there will be a pressure drop of approximately 25 PSI (1.7 BAR) across the unit. The water heater is designed to activate at a minimum flow of no less than 3 GPM (11.4 L/min).

INSTALLATION: The 9400/9400LPS is designed to supply tepid water for one shower/eyewash combo at a time. This water heating system should be installed in close proximity to the shower (5' to 12' of 1 1/4" IPS piping between the 9400/9400LPS outlet and the shower inlet). It should be clearly identified, with easy access, and should remain free of obstructions. Supply lines must be heat-traced if subject to freezing temperatures. If any part of the piping network runs through a cold area, this piping should be temperature controlled with self-regulating heat tape. Any heat-traced piping should be protected with scald protection bleed valves. Complicated chains of showers and eyewashes, long piping runs, and recirculating loops should all be evaluated by a qualified engineer.

IMPORTANT: The 9400/9400LPS is designed for intermittent operation only. Outlet tepid water must only be used for emergency shower/eyewash stations. Continuous operation and/or use of tepid water for other applications may result in hazardous conditions and potential personal injury. Improper operation is not covered in warranty.

LIFTING: Caution: Do not lift unit by grasping yellow enclosure. Yellow enclosure is not designed to support weight. When lifting, moving or aligning, always grasp the inlet and outlet piping only. NEVER GRASP THE UNIT BY THE ENCLOSURE.

MOUNTING: Caution: DO NOT MOUNT YELLOW ENCLOSURE DIRECTLY TO THE WALL.

Unit weighs 105 lb. (47.6 kg) empty, and is designed to be supported by the cold water inlet and tepid water outlet piping union connections. Proper mounting is required to maintain access for testing and service. Unit must be mounted so that both halves of the yellow enclosure may be removed for service. Minimum recommended clearance of 7".

*See included Installation drawing. Remove plugs from inlet and outlet unions and save for future use (when servicing the unit). Flush piping prior to connecting to inlet unions to eliminate debris. Connect outlet union to piping leading to shower/eyewash. Check for leaks.

CAUTION: All inlet and outlet piping to the 9400/9400LPS should remain independent and should not be tied in together at any point.

MODEL 9400/9400LPS MIXING SYSTEM

INSTALLATION INSTRUCTIONS CONT.

STEAM: MODEL 9400 - STEAM INLET PRESSURE MUST BE REGULATED at 45 PSI to 60 PSI.
MODEL 9400LPS - STEAM INLET PRESSURE (LOW PRESSURE) MUST BE REGULATED at 15 PSI to 30 PSI.

If a pressure regulator is required it is recommended that a pilot-operated steam pressure regulating valve be used to maintain the pressure setting under all flow conditions. If the supply pressure to the regulator is greater than 75 PSI (5.2 BAR) on model 9400 or 45 PSI (3.1 BAR) on model 9400LPS, then a pressure relief valve must be used. For operation at other pressures, consult factory.

The 9400/9400LPS contains internal steam trap. Redundant steam traps are not recommended.

MODEL 9400 - MAXIMUM STEAM TEMPERATURE IS 350°F (176.7°C).

MODEL 9400LPS - MAXIMUM STEAM TEMPERATURE IS 274°F (134°C) @ 30 PSI OR 250°F (121°C) @ 15 PSI.

Pipe steam inlet with 1" Schedule 40 (minimum) pipe. Install a 1" ball valve for service isolation and as a safety shutoff.

CAUTION: Always use back-up wrench when connecting to the 9400/9400LPS unit. Do not allow rotation of any piping on station while connecting steam and water lines. Rotation of piping in or on station may cause damage and malfunction.

DRAIN PIPE: This line should be piped with 1" Schedule 40 (minimum) pipe to steeply sloped air gap within 10', catch basin or open drain. If operated in freezing temperatures the drain line must be heat traced and terminated 12" from grade to prevent blockage due to freezing.

CAUTION: This line must be free-flowing in order for the unit to operate correctly. NO STEAM TRAP SHOULD BE USED ON THIS LINE! ADDITION OF STEAM TRAP OR RESTRICTION WILL CAUSE SERIOUS SCALDING HAZARD! During operation of the 9400/9400LPS unit, this line will discharge condensate and drain water from the system and some flash steam vapors. It must be piped so that there is no back pressure restriction. Do not tie other drain lines into drain pipe.

In order to prevent freeze damage to the water supply line to the 9400/9400LPS or to the safety shower/eyewash station, and to safeguard against over temperature water conditions caused by solar radiation, heat tracing, or other local heat sources, FREEZE AND SCALD PROTECTION VALVES MUST BE INSTALLED per industry standards prior to and after the station. If heat tracing is applied to the water supply line, the freeze protection valve may be installed as backup protection. Depending on system piping layout, additional freeze and over-temperature protection valves may be required.

WATER: MINIMUM WATER INLET PRESSURE OF 55 PSI (3.8 BAR). Water pressure up to 90 PSI (6.21 BAR) is allowable as long as the downstream flow rate is regulated to less than 25 GPM (94.6 L/min). Pipe the water inlet using 1 1/4" schedule 40 (minimum) pipe. Where sediment or mineral content is a problem, an in-line filter and strainer is required. A WATER HAMMER ARRESTOR IS REQUIRED TO BE INSTALLED AT MOST 10 FT FROM THE SHOWER VALVE.

CAUTION: Always use a back-up wrench when tightening union connection to prevent damage.

MAINTENANCE: Consult the factory before attempting any maintenance.

MODEL 9400/9400LPS MIXING SYSTEM

TESTING CHECKLIST

STEP 1

Remove the 9400/9400LPS station's front cover.

STEP 2

Check the condensate drain to confirm it is free of restriction and blockage. Some dripping from condensate drain is normal while the station is idle, but no steam should be seen.

STEP 3

Check yellow rubber hoses for signs of leakage and tighten clamps if necessary.

STEP 4

Activate the shower and confirm V3 indicator moves to an open position. The indicator on V3 may take up to 15 seconds to begin to move after shower activation.

V3 INDICATOR CLOSED POSITION



V3 INDICATOR OPEN POSITION



STEP 5

Check outlet temperature of shower using a thermometer to confirm proper operation. Thermometer should read 82°F (+/-5°F).

STEP 6

Shut off shower flow and confirm V3 indicator moved to closed position. Steam pluming from condensate drain is normal when shower flow stops. Once the V3 indicator has closed, confirm that no steam is coming from condensate drain before replacing cover.

STEP 7

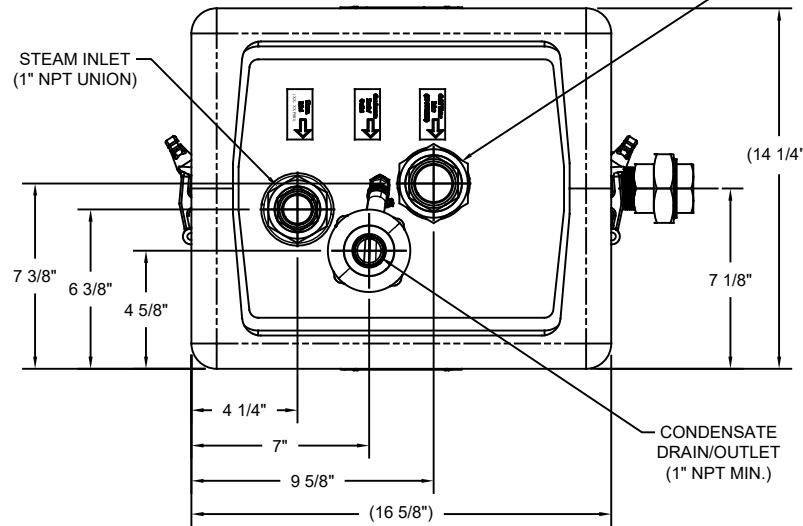
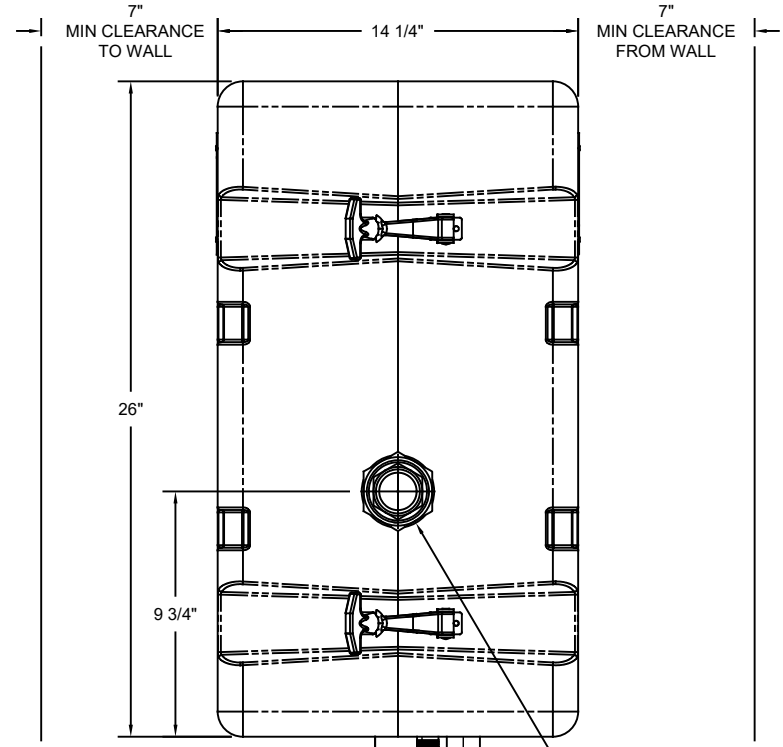
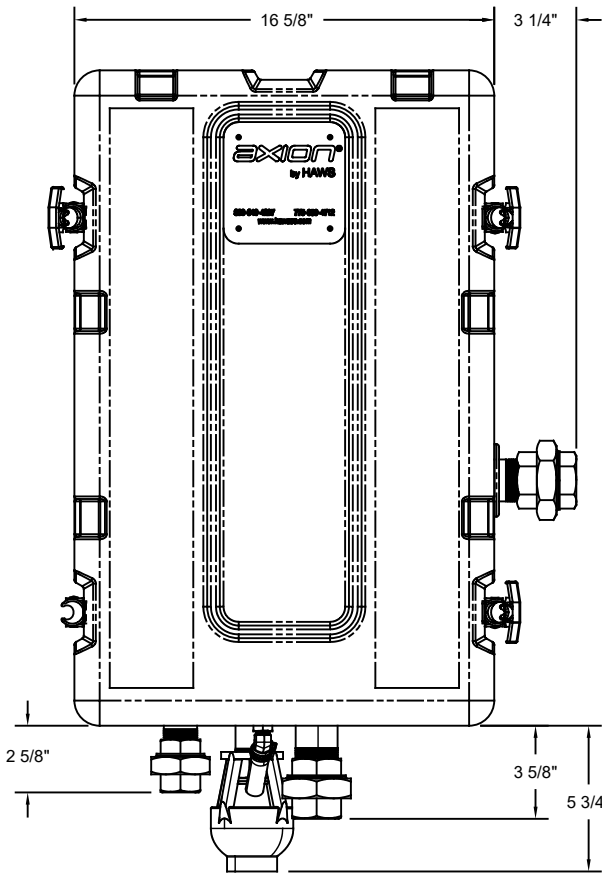
Repeat steps 1-6 each time the shower is tested.

NOTES:

1. DIMENSIONAL TOLERANCES: $\pm 1/2"$.
2. RECOMMENDED WATER PRESSURE:
55 psi (3.79 bar) MIN.
90 psi (6.21 bar) MAX.
3. **MODEL 9400:**
RECOMMENDED SATURATED STEAM PRESSURE:
45 psi TO 60 psi (3.10 bar TO 4.14 bar)
MAXIMUM SATURATED STEAM TEMPERATURE:
350° F (177° C)
4. **MODEL 9400LPS:**
RECOMMENDED SATURATED STEAM PRESSURE:
15 psi TO 30 psi (1.03 bar TO 2.07 BAR)
MAXIMUM SATURATED STEAM PRESSURE:
274° F (134° C) @ 30 psi (2.07 bar)
250° F (121° C) @ 15 psi (1.03 bar)



MODEL 9400
SHOWN



COLD WATER INLET
(1 1/4" NPT UNION)

DRAIN LINE WITH
AIR GAP FITTING
(1" NPT MIN.)

TEMPERED WATER OUTLET
(1 1/4" NPT UNION)
3' MIN DISTANCE TO
SAFETY SHOWER



1455 KLEPPE LANE
SPARKS, NEVADA 89431
(775) 359-4712 FAX (775) 359-7424
E-MAIL: HAWS@HAWSCO.COM
WEBSITE: WWW.HAWSCO.COM

ECN NO. 4930		REVISED PER BY: ECN: 5741 FV		MODEL(S)		PART NUMBER	
DRAWN: VC		DATE: 10/01/14		CHKD.: BJM		9400/9400LPS	
APPROVED: FV		DATE: 11/12/21		SCALE: NA		DRAWING TYPE: INSTALLATION	
						REVISION	
						11	
						SHEET 1 OF 1	