

NOTES:

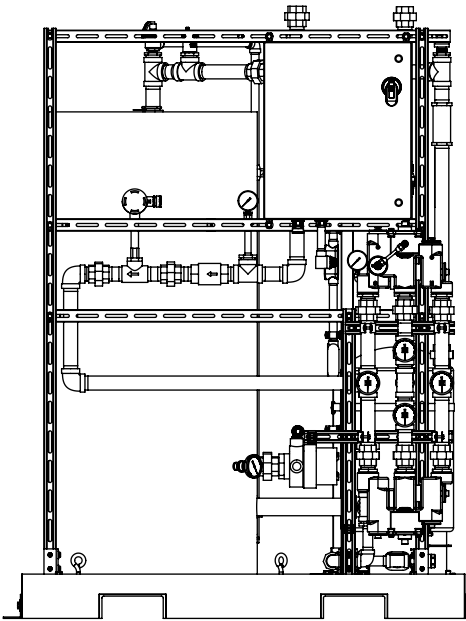
1. DIMENSIONS IN INCHES.
2. ALL TOLERANCES:  $\pm 1/2"$
3. ESTIMATED WEIGHT:  
 DRY: 1200 LB  
 WET: 3900 LB
4. AREA CLASSIFICATION: ORDINARY
5. AMBIENT TEMPERATURE: 32°F-104°F
6. NOT ALL FEATURES ARE STANDARD

# MODELS WITH RECIRCULATION PUMP OR NO PUMP

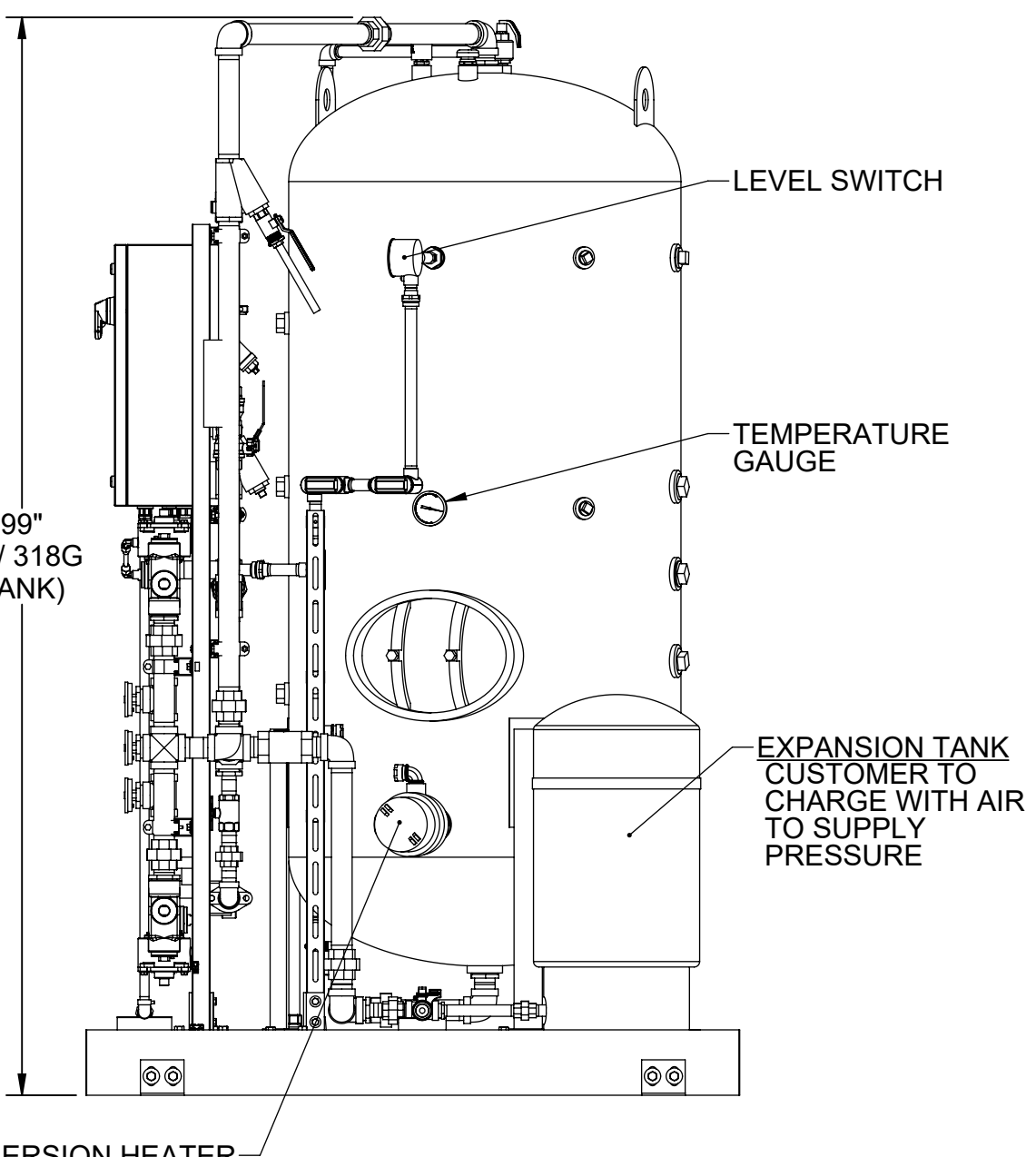
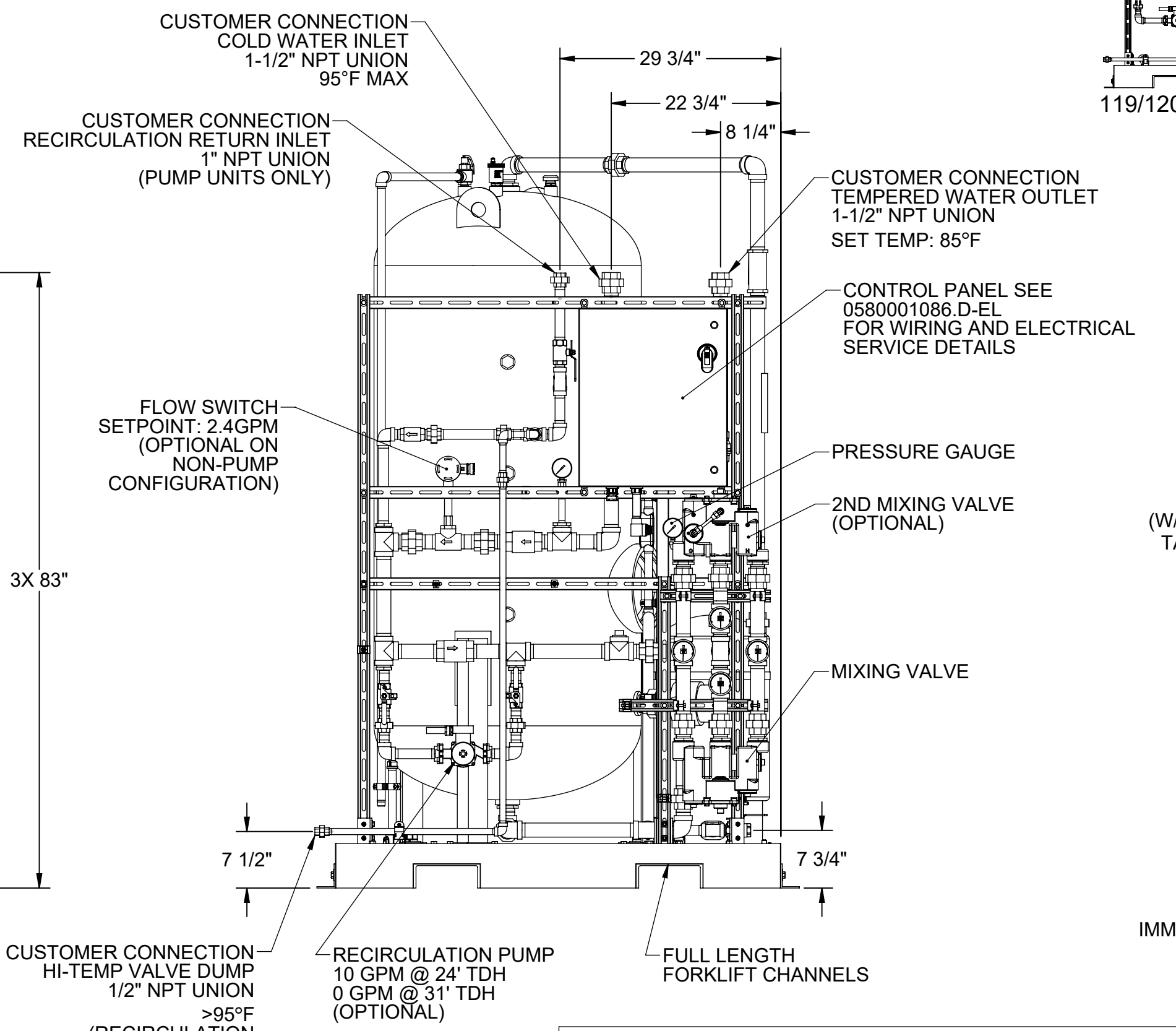
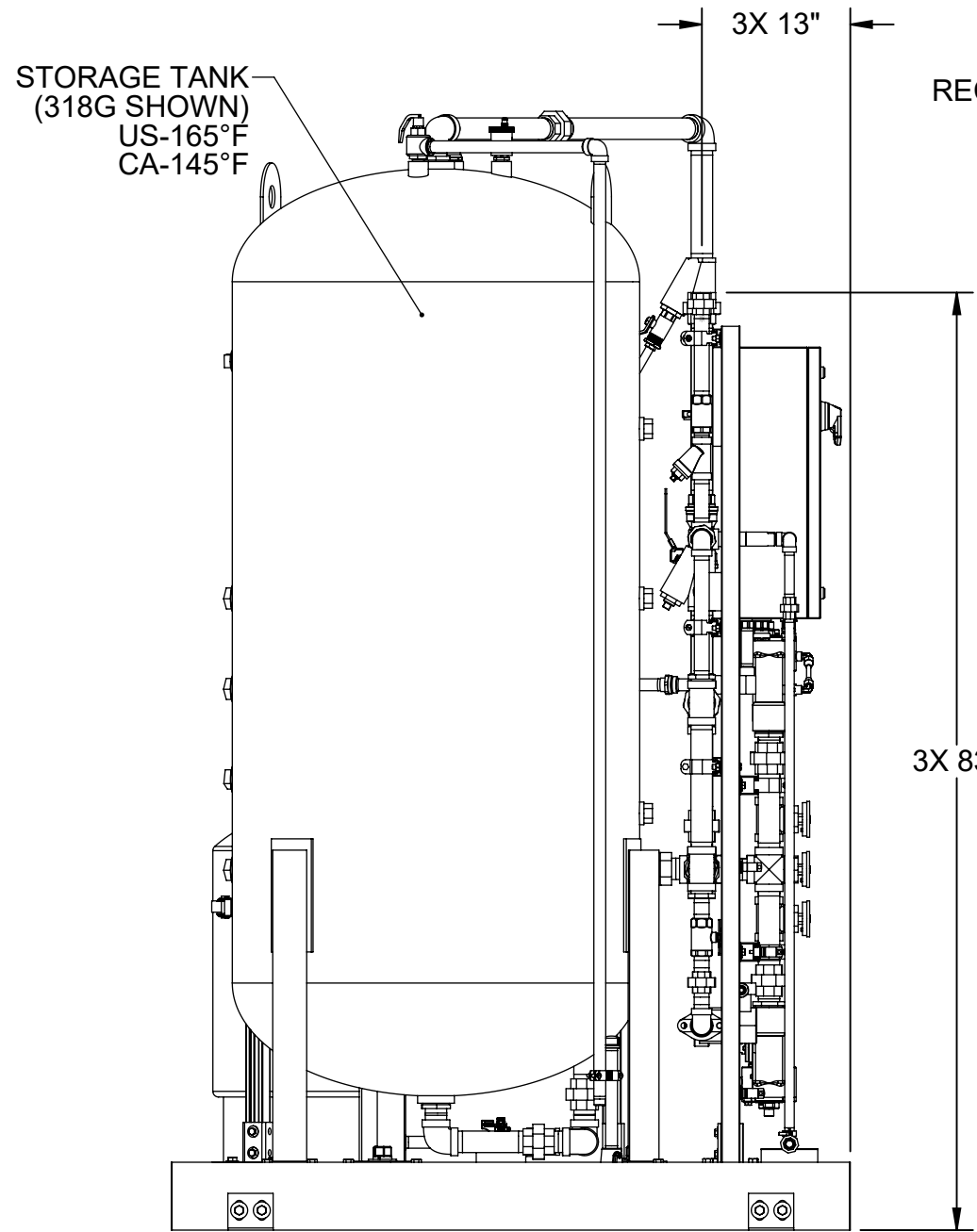
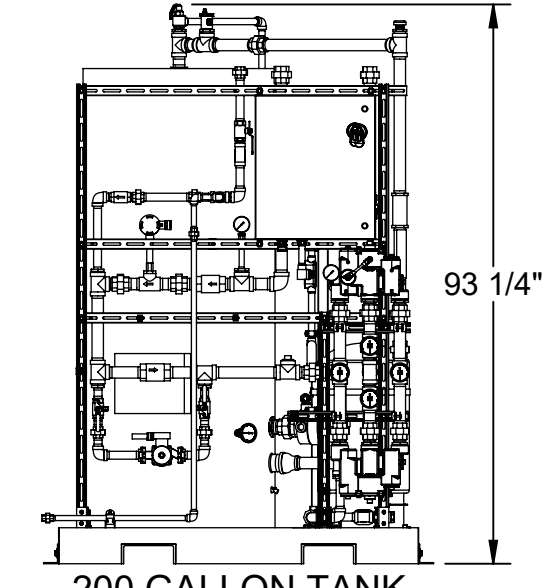
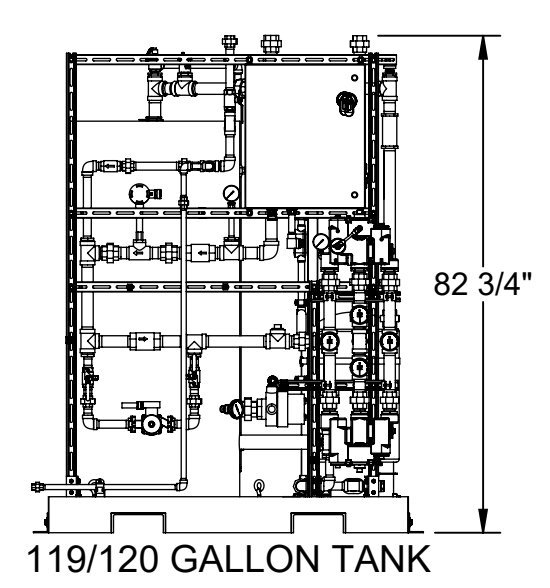
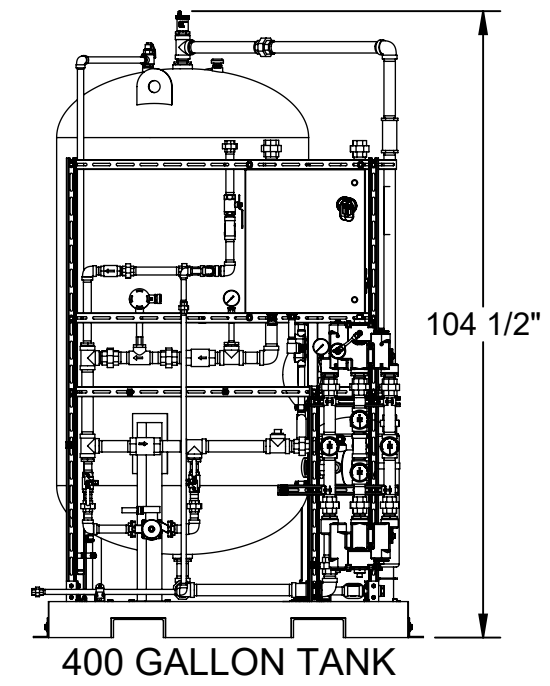
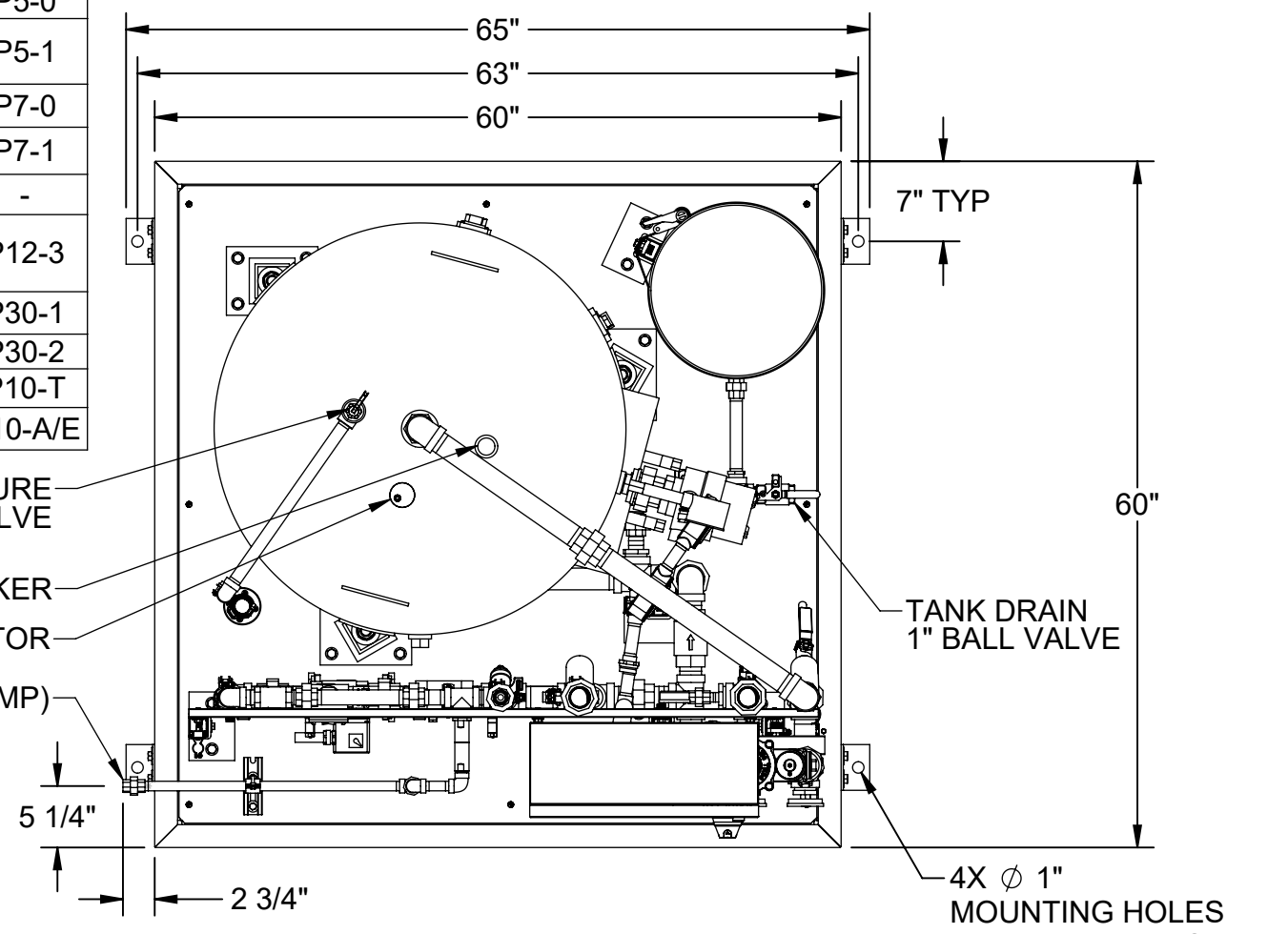
REVISONS				
REV	DESCRIPTION	ECN	DATE	BY
3	PER ECO	5817	5/20/2022	IR

OPTIONS		DWG REF.
PUMP CONFIGURATION	NO PUMP	P5-0
	RECIRCULATION PUMP	P5-1
JUNCTION BOX TYPE RATING	TYPE 4, STEEL	P7-0
	TYPE 4X, 304 SST	P7-1
ALARM (IN USE)	NONE	-
	ISOLATED DRY CONTACTS	P12-3
MIXING VALVE QTY.	SINGLE	P30-1
	DUAL	P30-2
EXPANSION TANK	NON-ASME	P10-T
	ASME	P10-A/E

TANK SIZE				
(TANK TEMPERATURES ARE SET AT 165°F FOR USA AND 145°F FOR CANADA)				
TANK SIZE	TANK TEMP.	SHOWER CAPACITY (15 MIN.)	MINIMUM INLET TEMP.	OPTION SELECTED
119G	145°F	1	62°F	
	165°F	1	54°F	
120G	145°F	1	62°F	
	165°F	1	54°F	
200G	145°F	1	35°F	
	165°F	1	32°F	
318G	145°F	2	50°F	
	165°F	2	39°F	
400G	145°F	2	35°F	
	165°F	2	32°F	



119/120 GALLON TANK, NO PUMP



THE ATTACHED DESIGNS ARE CONSIDERED TRADE SECRETS AND POTENTIALLY PATENTABLE. IN ACCORDANCE WITH CONFIDENTIALITY AND NON-DISCLOSURE AGREEMENT, THESE DESIGNS IN ACTUAL OR CONCEPTUAL FORMS CANNOT BE DISCLOSED, REPRODUCED OR USED WITHOUT HAWS' EXPRESS WRITTEN CONSENT.

CUSTOMER INFO/TAG #:		<b>Haws</b> 1455 KLEPPE LANE SPARKS, NEVADA 89431 USA	
JOB NUMBER:	DP	TITLE	INDOOR EMERGENCY WATER TEMPERING SKID
DRAWN BY:	DP	NOTICE OF PROPRIETARY INFORMATION	THIRD ANGLE PROJECTION
DRAWN DATE:	06/16/21	INFORMATION CONTAINED HEREIN IS THE SOLE PROPERTY OF HAWS CORPORATION AND THIS DOCUMENT AND THE DATA DISCLOSED HEREIN OR HEREWITH IS NOT TO BE REPRODUCED, USED, OR DISCLOSED IN WHOLE OR IN PART TO ANYONE WITHOUT THE PERMISSION OF HAWS CORPORATION.	GA SH 1 OF 1
CHECKED BY:	JSLP	SCALE	1:16
CHECKED DATE:	07/06/22	SIZE	C
APPROVED BY:	IR	PART NO.	0580001086.D-GA
APPROVAL DATE:	07/06/22	REV.	3

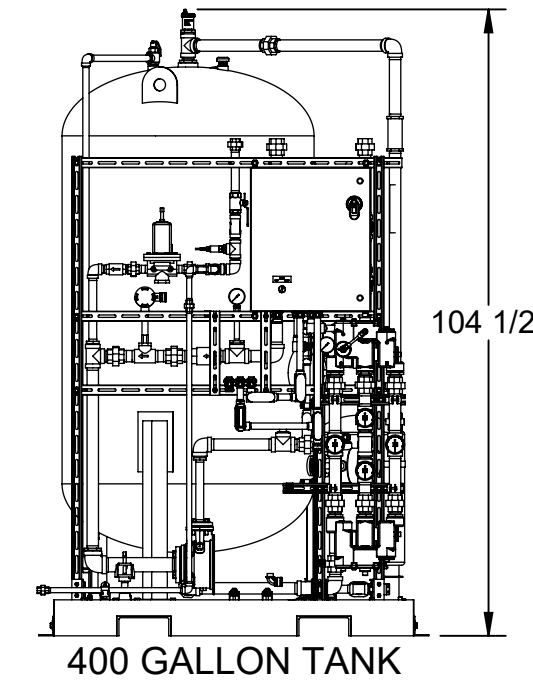
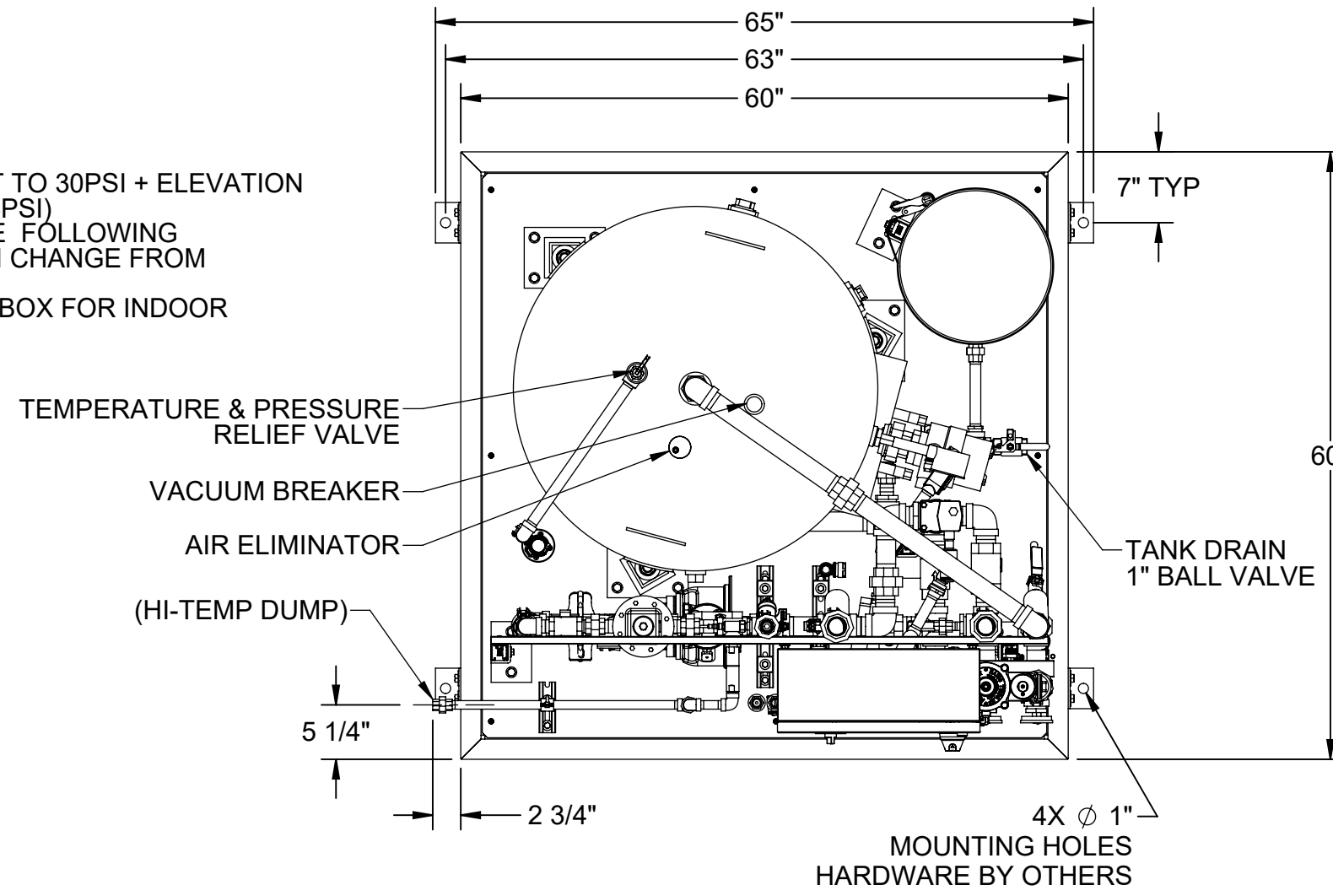
NOTES:

1. DIMENSIONS IN INCHES.
2. ALL TOLERANCES: ±1/2"
3. ESTIMATED WEIGHT:  
 DRY: 1200 LB  
 WET: 3900 LB
4. AREA CLASSIFICATION: ORDINARY
5. AMBIENT TEMPERATURE: 32°F-104°F
6. NOT ALL FEATURES ARE STANDARD
7. RECOMMENDED RECIRCULATION FLOWRATE: 10GPM
8. PRESSURE TRANSMITTER SETPOINT IS TYPICALLY SET TO 30PSI + ELEVATION CHANGE FROM SKID TO HIGHEST SHOWER (1FT = .433PSI)
9. A BACK PRESSURE REGULATOR IS REQUIRED FOR THE FOLLOWING CONDITION: SUPPLY PRESSURE < 30PSI + ELEVATION CHANGE FROM SKID TO HIGHEST SHOWER
10. RATINGS: CONFIGURABLE WITH TYPE 4/4X JUNCTION BOX FOR INDOOR LOCATION

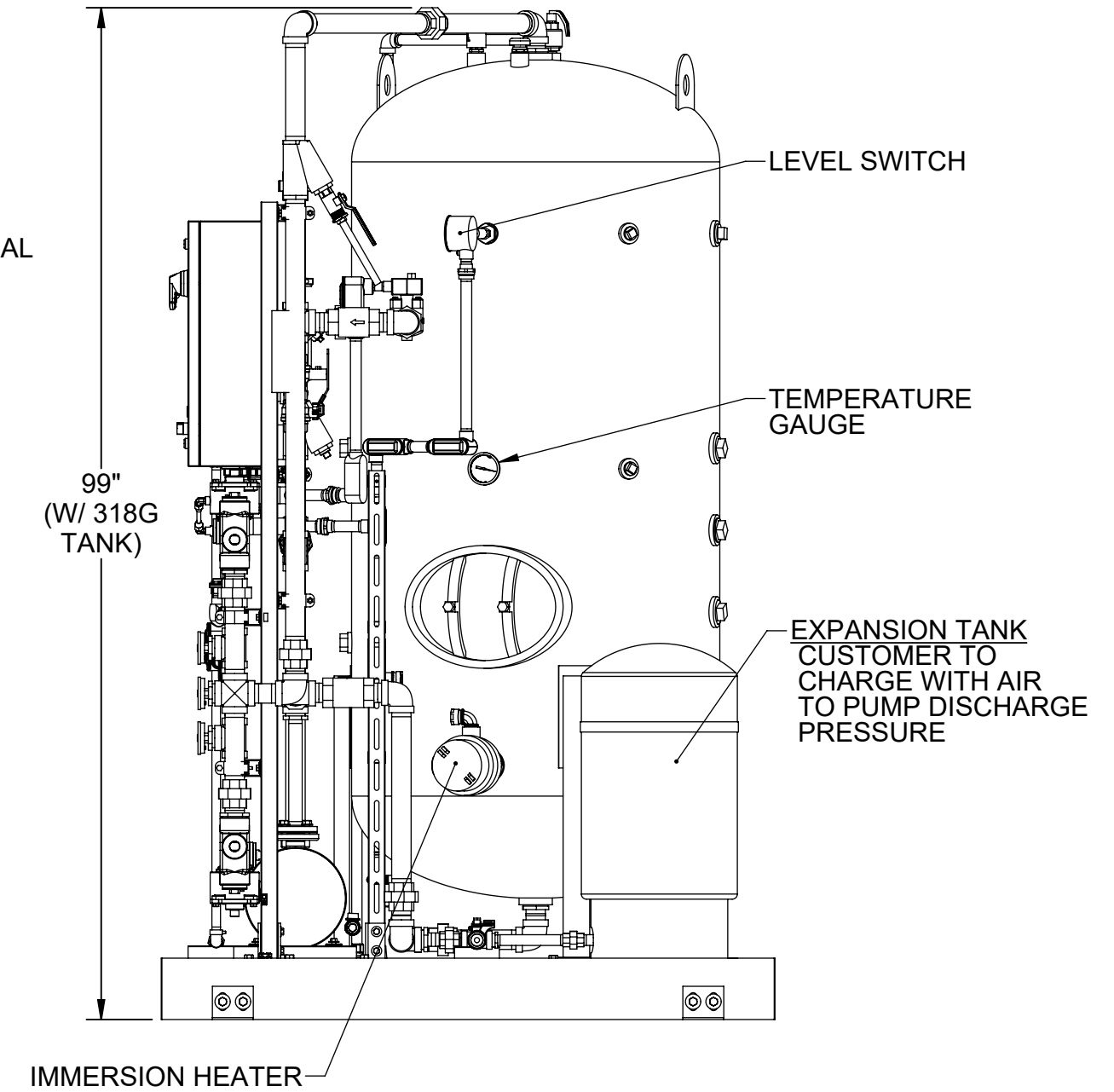
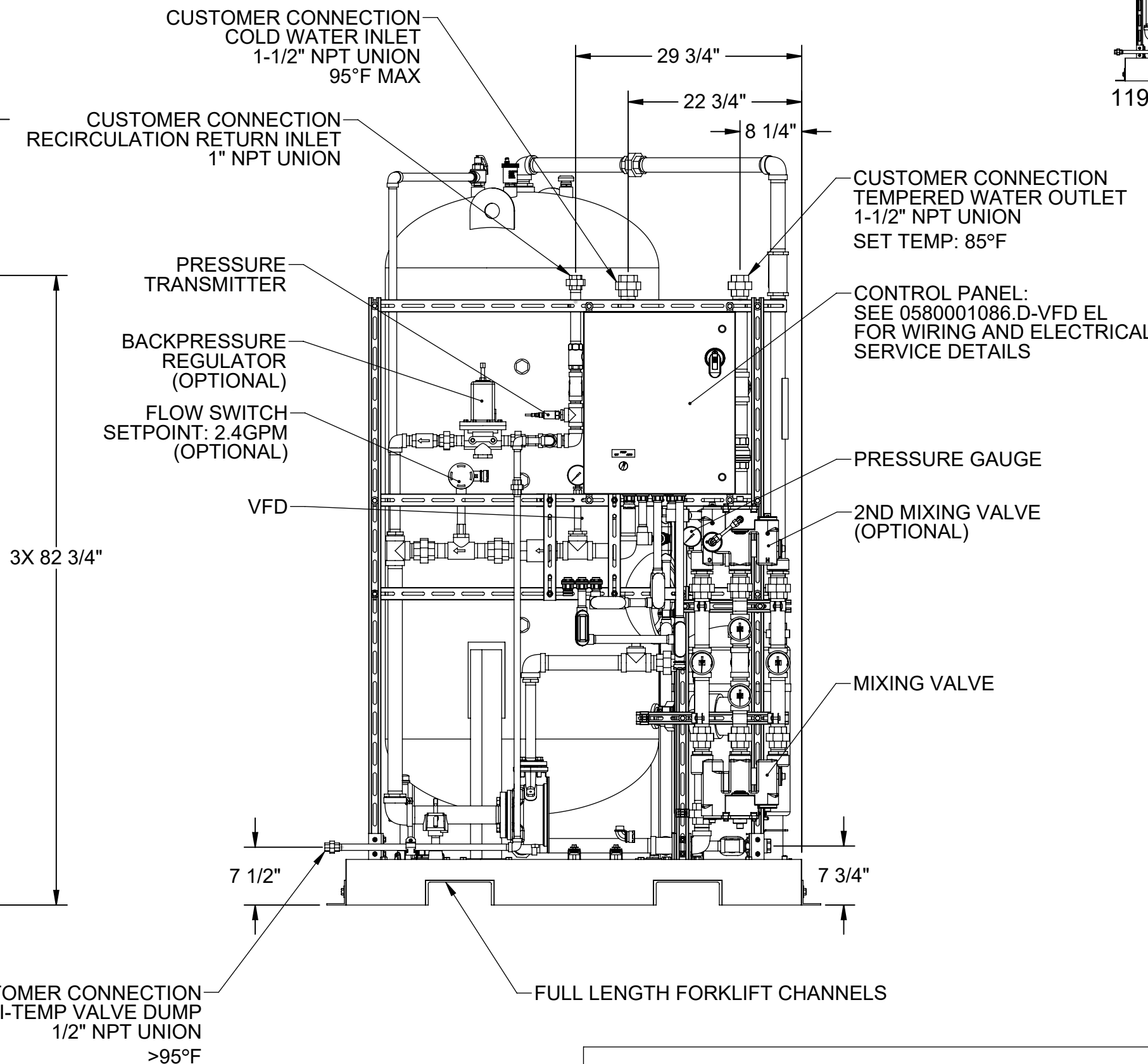
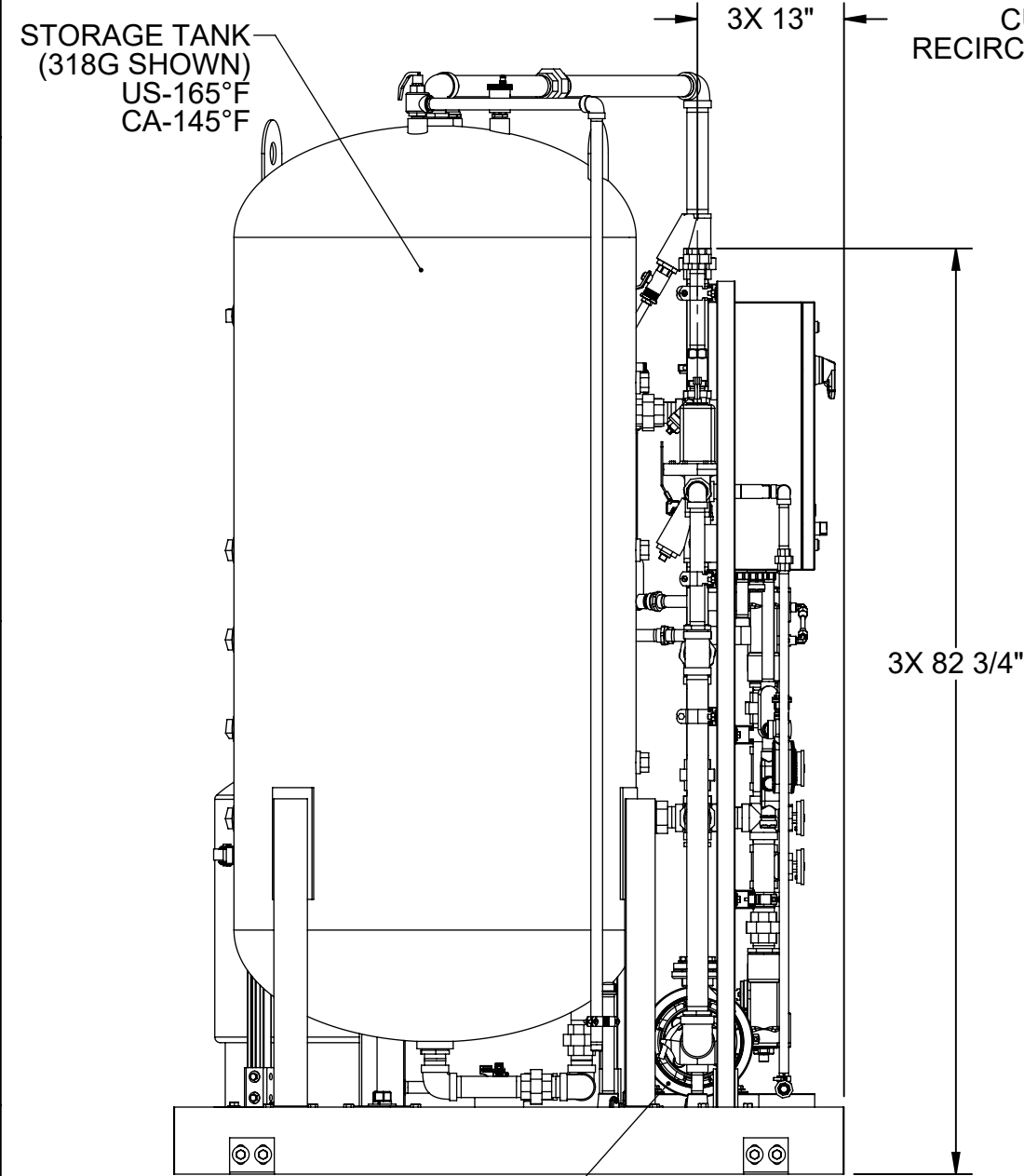
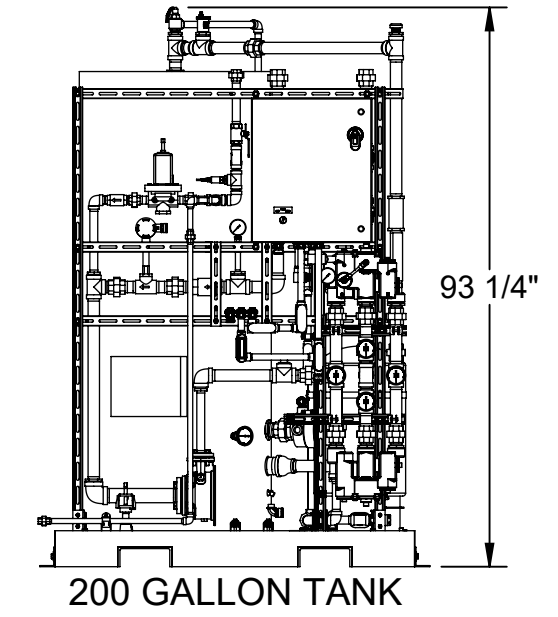
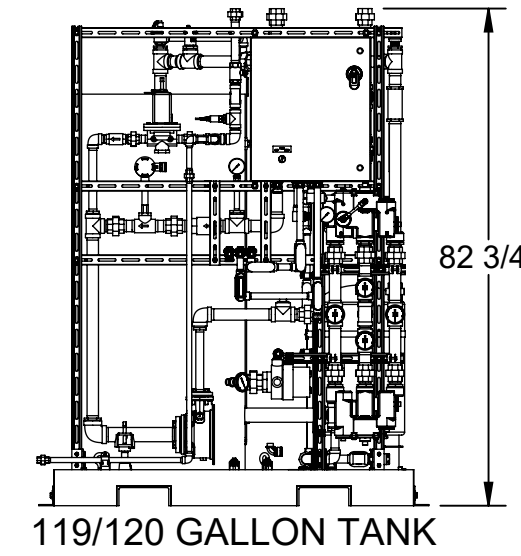
# MODELS WITH VFD RECIRC/BOOSTER PUMP

REVISIONS				
REV	DESCRIPTION	ECN	DATE	BY
3	PER ECO	5817	6/9/22	IR

OPTIONS		DWG REF.
PUMP CONFIGURATION	BOOSTER/RECIRC W/ VFD	P5-3
JUNCTION BOX TYPE RATING	TYPE 4, STEEL	P7-0
	TYPE 4X, 304 SST	P7-1
ALARM (IN USE)	NONE	-
	ISOLATED DRY CONTACTS	P12-3
MIXING VALVE QTY.	SINGLE	P30-1
	DUAL	P30-2



TANK SIZE				
(TANK TEMPERATURES ARE SET AT 165°F FOR USA AND 145°F FOR CANADA)				
TANK SIZE	TANK TEMP.	SHOWER CAPACITY (15 MIN.)	MINIMUM INLET TEMP.	OPTION SELECTED
119G	145°F	1	62°F	
	165°F	1	54°F	
120G	145°F	1	62°F	
	165°F	1	54°F	
200G	145°F	1	35°F	
	165°F	1	32°F	
318G	145°F	2	50°F	
	165°F	2	39°F	
400G	145°F	2	35°F	
	165°F	2	32°F	



BOOSTER/RECIRC PUMP  
 60GPM @ 133' TDH  
 0GPM @ 140' TDH

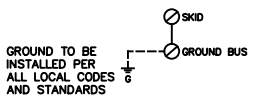
CUSTOMER CONNECTION  
 HI-TEMP VALVE DUMP  
 1/2" NPT UNION  
 >95°F

THE ATTACHED DESIGNS ARE CONSIDERED TRADE SECRETS AND POTENTIALLY PATENTABLE. IN ACCORDANCE WITH CONFIDENTIALITY AND NON-DISCLOSURE AGREEMENT, THESE DESIGNS IN ACTUAL OR CONCEPTUAL FORMS CANNOT BE DISCLOSED, REPRODUCED OR USED WITHOUT HAWS' EXPRESS WRITTEN CONSENT.

CUSTOMER INFO/TAG #:		<b>Haws</b> 1455 KLEPPE LANE SPARKS, NEVADA 89431 USA	
JOB NUMBER:	DP	TITLE <b>INDOOR EMERGENCY WATER TEMPERING SKID</b>	
DRAWN BY:	DP	NOTICE OF PROPRIETARY INFORMATION: INFORMATION CONTAINED HEREIN IS THE SOLE PROPERTY OF HAWS CORPORATION AND THIS DOCUMENT AND THE DATA DISCLOSED HEREIN OR HEREWITH IS NOT TO BE REPRODUCED, USED, OR DISCLOSED IN WHOLE OR IN PART TO ANYONE WITHOUT THE PERMISSION OF HAWS CORPORATION.	
DRAWN DATE:	06/16/21	THIRD ANGLE PROJECTION	
CHECKED BY:	JSLP	GA	SH 1 OF 1
CHECKED DATE:	07/06/22	SCALE SIZE PART NO. 1:16 C 0580001086.D-GA	
APPROVED BY:	IR	REV. 3	
APPROVAL DATE:	07/06/22		

REVISIONS					
REV	DESCRIPTION	ECN	DATE	BY	
2	PER ECO	5624	12/15/20	JS	
3	PER ECO	5817	01/02/21	JS	

3PH 60HZ		
VOLTAGE	NON-RECIRC PUMP UNIT DRAW	RECIRC PUMP UNIT DRAW
600V	5A	12.6A
480V	6.2A	15.8A
240V	12.4A	31.6A
208V	14.3A	36.4A



- 208V 3PH 60HZ (P1-2)
- 240V 3PH 60HZ (P1-4)
- 480V 3PH 60HZ (P1-5)
- 600V 3PH 60HZ (P1-6)
- 4KW HEATER
- 10KW HEATER

1PH 60HZ		
VOLTAGE	NON-RECIRC PUMP UNIT DRAW	RECIRC PUMP UNIT DRAW
240V	21.5A	54.7A
208V	24.8A	63.1A

- 208V 1PH 60HZ (P1-1)
- 240V 1PH 60HZ (P1-3)
- 4KW HEATER
- 10KW HEATER

OPTIONAL FEATURE THAT CAN BE CONFIGURED WHEN PURCHASED

**COMPONENT DESIGNATION**

- CFU - CONTROL POWER FUSE
- CON1 - CONTACTOR 3 POLE, TANK HEATER
- CP - CIRCULATING PUMP
- CR2 - CONTROL RELAY FOR ALARM NOTIFICATION
- CTR - CONTROL POWER TRANSFORMER
- NON-RECIRC CONFIGS - 100VA @ 120V
- RECIRC PUMP CONFIGS - 500VA @ 120V
- DISC - DISCONNECT SWITCH
- F1 - PUMP FUSE
- F2 - TANK HEATER FUSE
- FS - FLOW SWITCH
- HTR1 - HEATER, TANK
- NON-RECIRC CONFIGS - 4KW
- RECIRC PUMP CONFIGS - 10KW
- LS - LEVEL SWITCH
- PDB - POWER DISTRIBUTION BLOCK
- PFU - PRIMARY FUSE
- PMP - PUMP
- TB - TERMINAL BLOCK
- TSTAT1 - TANK HEATER THERMOSTAT

- NOTES:**
- AREA CLASSIFICATION: ORDINARY
  - AVAILABLE AMBIENT TEMPERATURE RANGE: 32°F - 104°F
  - RATINGS: CONFIGURABLE WITH TYPE 4/4X JUNCTION BOX FOR INDOOR LOCATION

**P5-0 NON-RECIRC PUMP CONFIGS. FUSE CHART**

	DFU	F2	PFU	CFU
208V 1PH	30A	25A	1.25A	1A
240V 1PH	30A	25A	1A	1A
208V 3PH	30A	15A	1.25A	1A
240V 3PH	30A	12A	1A	1A
480V 3PH	30A	6A	.5A	1A
600V 3PH	30A	5A	.5A	1A

FUSE TYPE JKS KLR KLR

**P5-1 RECIRC PUMP CONFIGS. FUSE CHART**

	DFU	F2	PFU	CFU
208V 1PH	100A	60A	6A	5.6A
240V 1PH	60A	60A	5.6A	5.6A
208V 3PH	60A	35A	6A	5.6A
240V 3PH	60A	30A	5.6A	5.6A
480V 3PH	30A	15A	2.8A	5.6A
600V 3PH	30A	12A	2A	5.6A

FUSE TYPE JKS KLR KLR

**CONDUCTOR TERMINAL RATING**

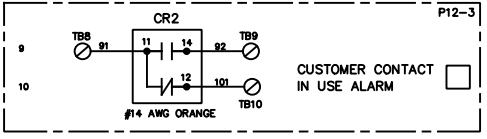
DISCONNECT SIZE	DISCONNECT		DRY CONTACTS	
	CONDUCTOR SIZE (AWG)	TORQUE VALUE (IN-LBS)	CONDUCTOR SIZE (AWG)	TORQUE VALUE (IN-LBS)
100A	14-2/0	133-194	14-20	PUSH-IN
60A	14-4	30-35		
30A	18-8	13-18		

**WIRE SIZE CHART**

	A		B		C	
	4KW	10KW	4KW	10KW	4KW	10KW
208V 1PH	#8	#4	#10	#6	#8	#0
240V 1PH	#8	#4	#10	#8	#8	#4
208V 3PH	#10	#6	#12	#8	#8	#4
240V 3PH	#10	#8	#12	#8	#8	#4
480V 3PH	#12	#10	#12	#12	#8	#8
600V 3PH	#12	#10	#12	#12	#8	#8

THE ATTACHED DESIGNS ARE CONSIDERED TRADE SECRETS AND POTENTIALLY PATENTABLE. IN ACCORDANCE WITH CONFIDENTIALITY AND NON-DISCLOSURE AGREEMENT, THESE DESIGNS IN ACTUAL OR CONCEPTUAL FORMS CANNOT BE DISCLOSED, REPRODUCED OR USED WITHOUT HAWS' EXPRESS WRITTEN CONSENT.

CONTROL RELAY CONTACT RATINGS:  
6A @ 250 VAC/30VDC RESISTIVE  
SWITCH POSITION SHOWN FOR ALARM CONDITION

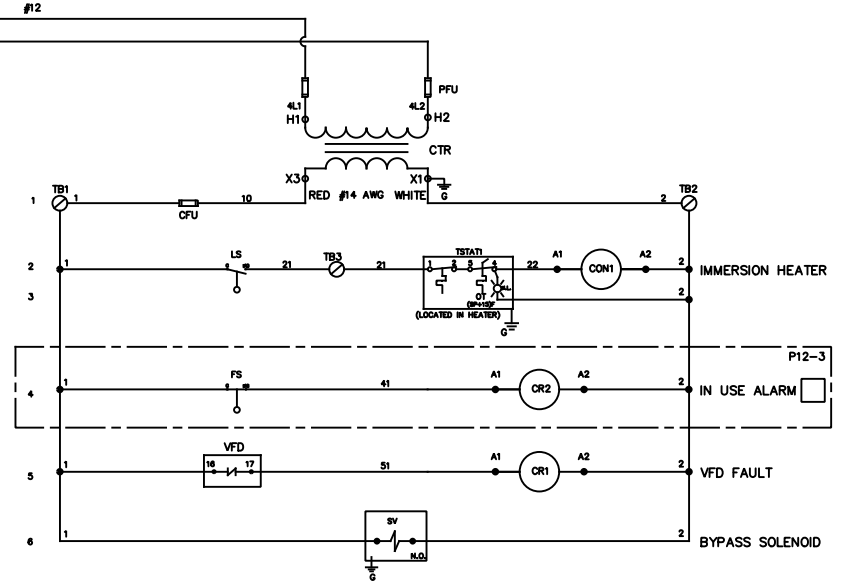
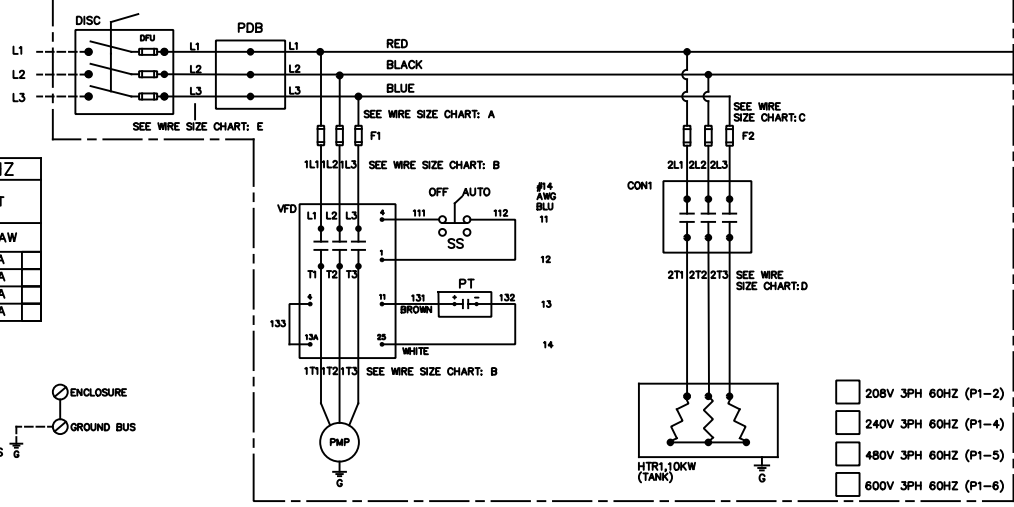


APPROVALS	DATE		1455 KLEPPE LANE SPARKS, NEVADA 89431 USA
DRAWN	09/19/20		
CHECKED	IR		
APPROVED	07/08/22		
JOB NUMBER		TITLE: 8780 - INDOOR EMERGENCY WATER TEMPERING SKID	
CUSTOMER INFO TAG #:		NOTICE OF PROPRIETARY INFORMATION	
		INFORMATION CONTAINED HEREIN IS THE SOLE PROPERTY OF HAWS CORPORATION AND THIS DOCUMENT AND THE DATA DISCLOSED HEREIN OR HEREWITH IS NOT TO BE REPRODUCED, USED, OR DISCLOSED IN WHOLE OR IN PART TO ANYONE WITHOUT THE PERMISSION OF HAWS CORPORATION.	
SCALE	SIZE	PART NUMBER	THIRD ANGLE PROJECTION
1	C	0580001086.D-EL	ELECTRICAL
			REV 3

REVISIONS					
REV	DESCRIPTION	ECN	DATE	BY	
2	PER ECD	5624	12/5/20	JS	
3	PER ECD	5817	4/21/22	JS	

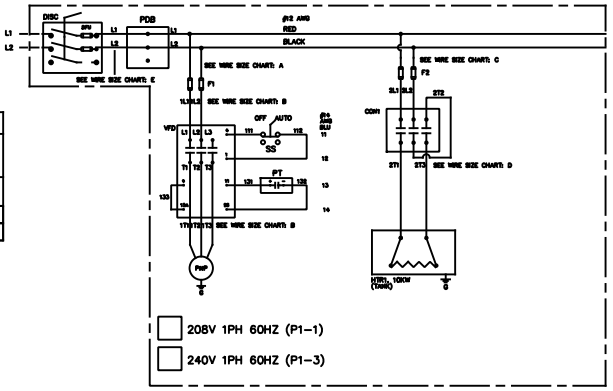
3PH 60HZ	
BASE UNIT	
VOLTAGE	DRAW
600V	19.8A
480V	24.7A
240V	49.4A
208V	55.9A

GROUND TO BE INSTALLED PER ALL LOCAL CODES AND STANDARDS

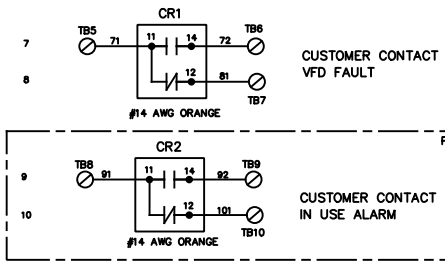


1PH 60HZ	
BASE UNIT	
VOLTAGE	DRAW
240V	87.6A
208V	99.2A

- 208V 1PH 60HZ (P1-1)
- 240V 1PH 60HZ (P1-3)



CONTROL RELAY CONTACT RATINGS:  
6A @ 250 VAC/30VDC RESISTIVE  
SWITCH POSITION SHOWN FOR ALARM CONDITION



COMPONENT DESIGNATION

- CFU - CONTROL FUSE
- CON1 - CONTACTOR 3 POLE, TANK HEATER
- CR1 - CONTROL RELAY FOR ALARM NOTIFICATION
- CR2 - CONTROL RELAY FOR ALARM NOTIFICATION
- CTR - CONTROL POWER TRANSFORMER - 100VA @ 120V
- DISC - DISCONNECT SWITCH
- F1 - PUMP FUSE
- F2 - TANK HEATER FUSE
- F3 - SPACE HEATER FUSE
- FS - FLOW SWITCH
- HTR1 - HEATER, TANK, 10KW
- LS - LEVEL SWITCH
- PDB - POWER DISTRIBUTION BLOCK
- PFU - PRIMARY FUSE
- PMP - PUMP
- PT - PRESSURE TRANSMITTER
- SS - SELECTOR SWITCH OFF/AUTO
- SV - SOLENOID VALVE
- TB - TERMINAL BLOCK
- TSTAT1 - TANK HEATER THERMOSTAT
- VFD - VARIABLE FREQUENCY DRIVE

VOLTAGE	DISCONNECT		DRY CONTACTS	
	CONDUCTOR SIZE (AWG)	TORQUE VALUE (IN-LBS)	CONDUCTOR SIZE (AWG)	TORQUE VALUE (IN-LBS)
208V 1PH	14-2/0	133-194	14-20	PUSH-IN
240V 1PH	14-2/0	133-194		
208V 3PH	14-4	30-35		
240V 3PH	14-4	30-35		
480V 3PH	18-8	13-18		
600V 3PH	18-8	13-18		

	WIRE SIZE CHART				
	A	B	C	D	E
208V 1PH	#6	#8	#4	#6	#0
240V 1PH	#6	#10	#4	#8	#0
208V 3PH	#8	#12	#6	#8	#4
240V 3PH	#8	#12	#8	#8	#4
480V 3PH	#12	#12	#10	#12	#8
600V 3PH	#12	#12	#10	#12	#8

	FUSE CHART				
	DFU	F1	F2	PFU	CFU
208V 1PH	100A	45A	60A	1.25A	1A
240V 1PH	100A	45A	60A	1A	1A
208V 3PH	60A	30A	35A	1.25A	1A
240V 3PH	60A	30A	30A	1A	1A
480V 3PH	30A	20A	15A	.5A	1A
600V 3PH	30A	12A	12A	.5A	1A
FUSE TYPE	JKS	KLKR	KLKR	KLDR	KLDR

OPTIONAL FEATURE THAT CAN BE CONFIGURED WHEN PURCHASED

THE ATTACHED DESIGNS ARE CONSIDERED TRADE SECRETS AND POTENTIALLY PATENTABLE. IN ACCORDANCE WITH CONFIDENTIALITY AND NON-DISCLOSURE AGREEMENT, THESE DESIGNS IN ACTUAL OR CONCEPTUAL FORMS CANNOT BE DISCLOSED, REPRODUCED OR USED WITHOUT HAWS' EXPRESS WRITTEN CONSENT.

- NOTES:
- AREA CLASSIFICATION: ORDINARY
  - AVAILABLE AMBIENT TEMPERATURE RANGE: 32°F - 104°F
  - RATINGS: CONFIGURABLE WITH TYPE 4/4X JUNCTION BOX FOR INDOOR LOCATION

APPROVALS	DATE	 1455 KLEPPLE LANE SPARKS, NEVADA 89431 USA
DRAWN: IR	09/18/20	
CHECKED: JSLP	07/08/22	
APPROVED: IR	07/08/22	
JOB NUMBER:		TITLE: 8780 - INDOOR EMERGENCY WATER TEMPERING SKID W/VFD PUMP
CUSTOMER INFO TAG #:		NOTICE OF PROPRIETARY INFORMATION INFORMATION CONTAINED HEREIN IS THE SOLE PROPERTY OF HAWS CORPORATION AND THIS DOCUMENT AND THE DATA DISCLOSED HEREIN OR HEREWITH IS NOT TO BE REPRODUCED, USED, OR DISCLOSED IN WHOLE OR IN PART TO ANYONE WITHOUT THE PERMISSION OF HAWS CORPORATION.
SCALE: 1	SIZE: C	PART NUMBER: 0580001086.D-VFD EL REV: 3

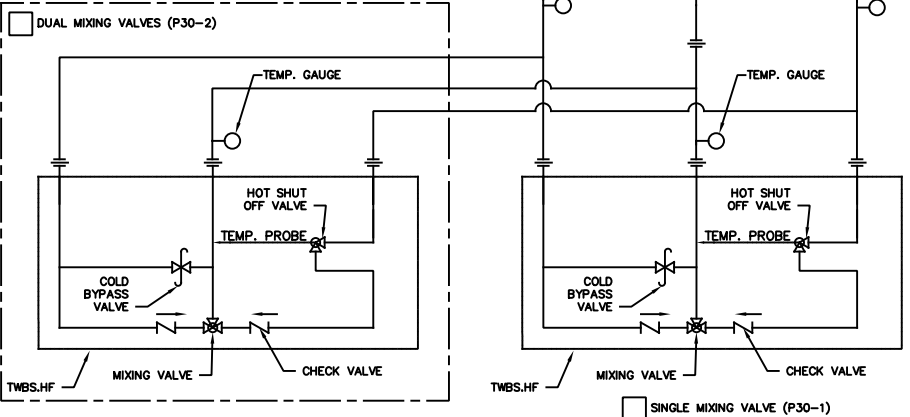
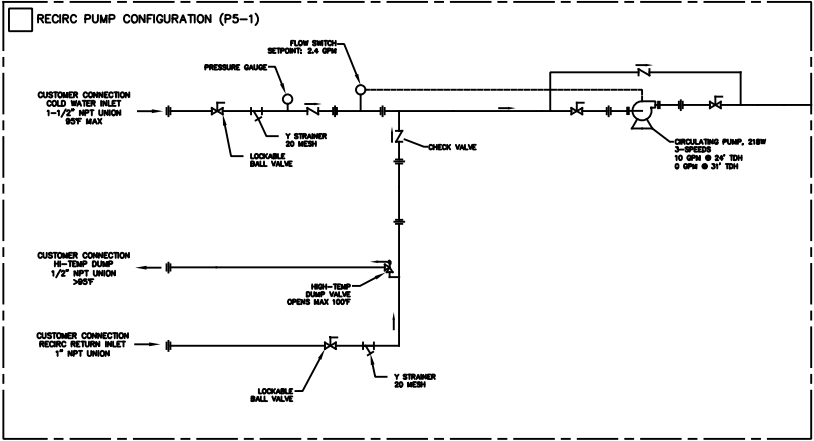
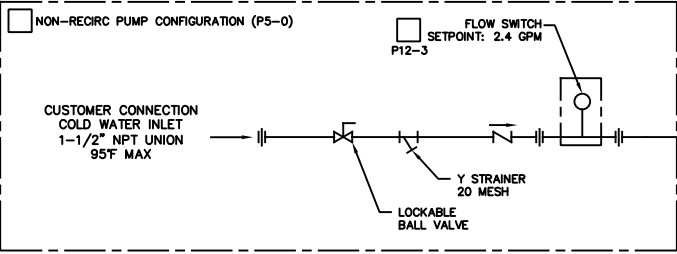
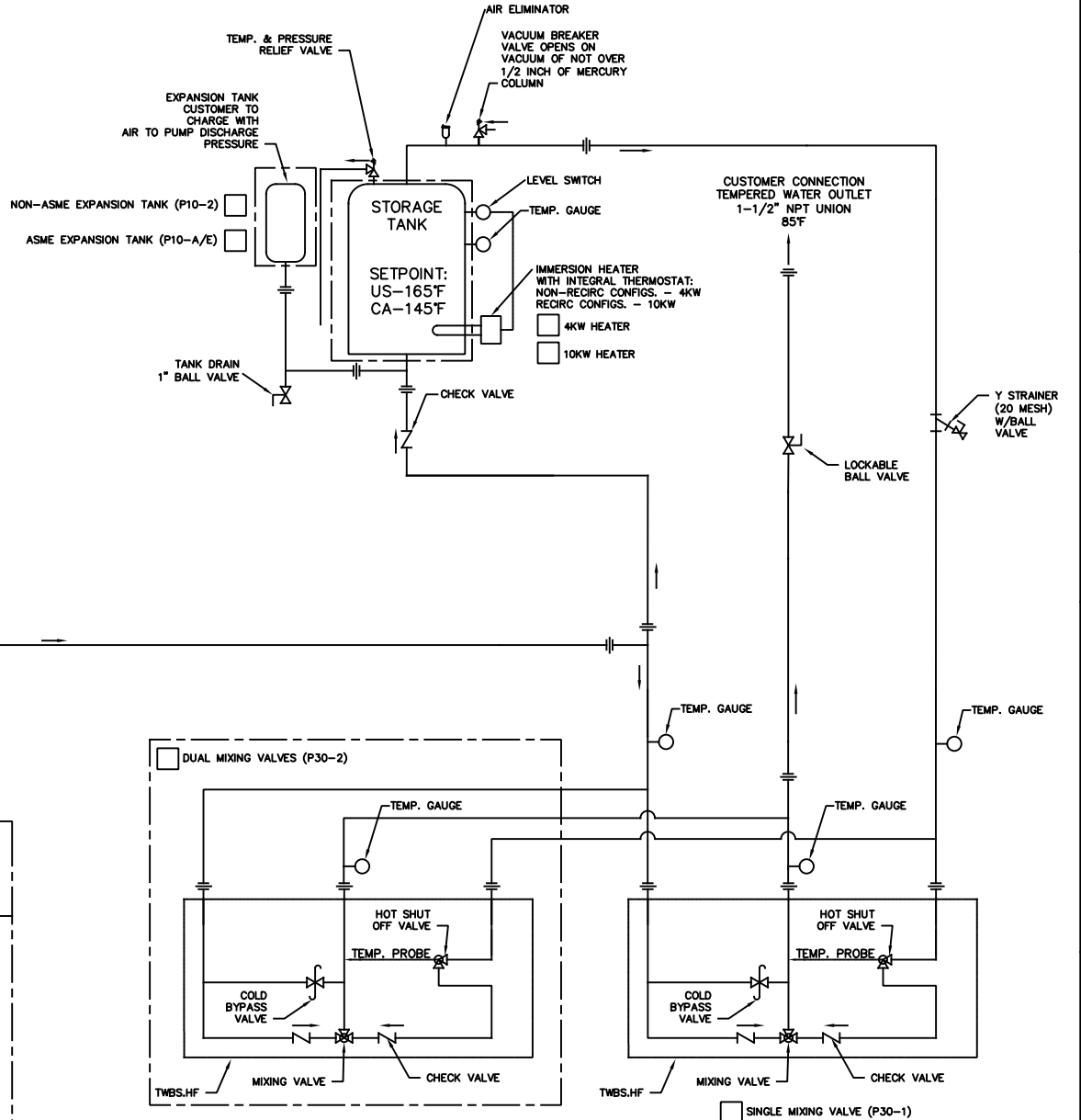
REVISIONS				
REV	DESCRIPTION	ECN	DATE	BY
1	PRELIM		03/18/20	IR
2	PERECC		07/06/22	SLP
3	PERECC		07/06/22	IR

- NOTES:
1. AREA CLASSIFICATION: ORDINARY
  2. AVAILABLE AMBIENT TEMPERATURE RANGE: 32°F - 104°F
  3. SEE TABLE 1 FOR PRESSURE DROP ACCROSS SKID. SHOWERS AND EYEWASHES REQUIRE 30PSI MINIMUM AT THEIR HIGHEST FLOW RATE.
  4. RATINGS: CONFIGURABLE WITH TYPE 4/4X JUNCTION BOX FOR INDOOR LOCATION

SKID CONFIGURATION	PRESSURE DROP
60GPM/SST PIPE/2 TWBS	17 PSI
60GPM/GALV PIPE/2 TWBS	24 PSI
60GPM/SST PIPE/1 TWBS	30 PSI
60GPM/GALV PIPE/1 TWBS	37 PSI
30GPM/SST PIPE/2 TWBS	4 PSI
30GPM/GALV PIPE/2 TWBS	6 PSI
30GPM/SST PIPE/1 TWBS	8 PSI
30GPM/GALV PIPE/1 TWBS	10 PSI

TABLE 1

TANK SIZE	TANK TEMP.	SHOWER CAPACITY (15 MIN.)	MINIMUM INLET TEMP.	OPTION SELECTED
119G	145°F	1	62°F	
	165°F	1	54°F	
120G	145°F	1	62°F	
	165°F	1	54°F	
200G	145°F	1	35°F	
	165°F	1	32°F	
318G	145°F	2	50°F	
	165°F	2	39°F	
400G	145°F	2	35°F	
	165°F	2	32°F	



THE ATTACHED DESIGNS ARE CONSIDERED TRADE SECRETS AND POTENTIALLY PATENTABLE. IN ACCORDANCE WITH CONFIDENTIALITY AND NON-DISCLOSURE AGREEMENT, THESE DESIGNS IN ACTUAL OR CONCEPTUAL FORMS CANNOT BE DISCLOSED, REPRODUCED OR USED WITHOUT HAWS' EXPRESS WRITTEN CONSENT.

APPROVALS	DATE	 1455 KLEPPE LANE SPARKS, NEVADA 89431 USA
DRAWN	03/18/20	
CHECKED	SLP 07/06/22	
APPROVED	IR 07/06/22	
JOB NUMBER		
CUSTOMER INFO TAG #:		TITLE: 8780 - INDOOR EMERGENCY WATER TEMPERING SKID
NOTICE OF PROPRIETARY INFORMATION INFORMATION CONTAINED HEREIN IS THE SOLE PROPERTY OF HAWS CORPORATION AND THIS DOCUMENT AND THE DATA DISCLOSED HEREIN OR HEREWITH IS NOT TO BE REPRODUCED, USED, OR DISCLOSED IN WHOLE OR IN PART TO ANYONE WITHOUT THE PERMISSION OF HAWS CORPORATION.		THIRD ANGLE PROJECTION  P&ID SHEET 1 OF 1 SCALE: SIZE PART NUMBER N/A C 0580001086.D-PID

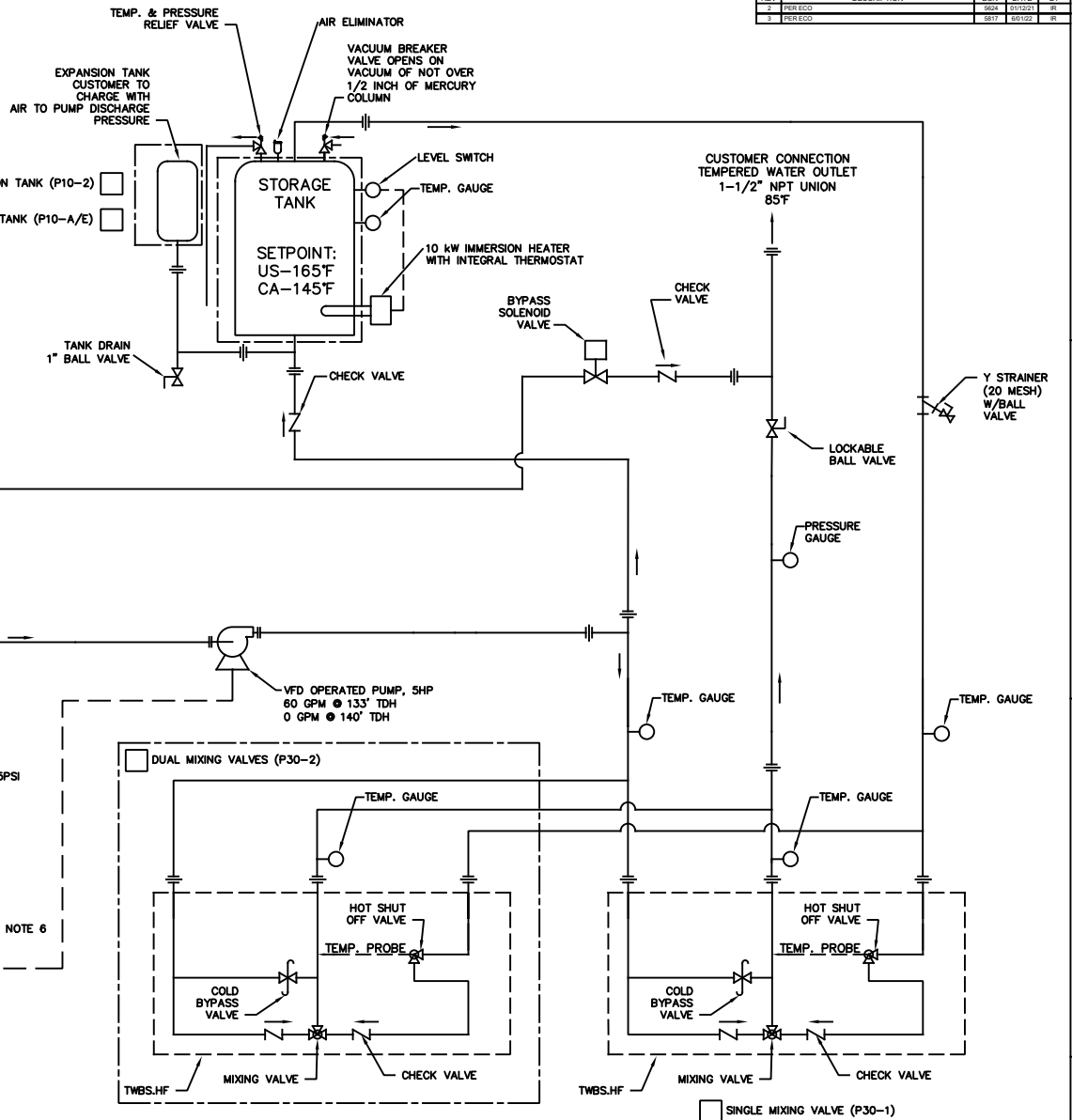
**ALLOWABLE SHOWER LOOP PRESSURE DROPS**  
(20PSI INLET, ELEVATION GAIN INCLUDED, SINGLE COMBINATION SHOWER FLOWS 30GPM)

SKID CONFIGURATION	PRESSURE DROP
60GPM/SST PIPE/2 TWBS	30 PSI
60GPM/GALV PIPE/2 TWBS	24 PSI
60GPM/SST PIPE/1 TWBS	17.5 PSI
60GPM/GALV PIPE/1 TWBS	11 PSI
30GPM/SST PIPE/2 TWBS	43.5 PSI
30GPM/GALV PIPE/2 TWBS	42 PSI
30GPM/SST PIPE/1 TWBS	39.5 PSI
30GPM/GALV PIPE/1 TWBS	38 PSI

TABLE 1

**TANK SIZE**  
(TANK TEMPERATURES ARE SET AT 165°F FOR USA AND 145°F FOR CANADA)

TANK SIZE	TANK TEMP.	SHOWER CAPACITY (15 MIN.)	MINIMUM INLET TEMP.	OPTION SELECTED
119G	145°F	1	62°F	
	165°F	1	54°F	
120G	145°F	1	62°F	
	165°F	1	54°F	
200G	145°F	1	35°F	
	165°F	1	32°F	
318G	145°F	2	50°F	
	165°F	2	39°F	
400G	145°F	2	35°F	
	165°F	2	32°F	



- NOTES:**
1. AREA CLASSIFICATION: ORDINARY
  2. AVAILABLE AMBIENT TEMPERATURE RANGE: 32°F - 104°F
  3. RATINGS: CONFIGURABLE WITH TYPE 4/4X JUNCTION BOX FOR INDOOR LOCATION
  4. SEE TABLE 1 FOR ALLOWABLE PRESSURE DROP FROM SKID OUTLET TO SHOWERS. PRESSURE DROP INCLUDES ELEVATION CHANGES. PRESSURE DROP VALUES GIVEN FOR SUPPLY PRESSURE OF 20PSI, IF SUPPLY PRESSURE IS HIGHER, ADD THE DIFFERENCE BETWEEN SUPPLY PRESSURE AND 20PSI TO THE PRESSURE DROP GIVEN TO GET ADJUSTED ALLOWABLE PRESSURE DROP. ALLOWABLE PRESSURE DROP SHOULD NEVER EXCEED 60PSI WITH OUT FURTHER ANALYSIS AS THIS COULD LEAD TO OVER-PRESSURIZING SHOWERS.
  5. RECOMMENDED RECIRCULATION FLOWRATE: 10GPM
  6. PRESSURE TRANSMITTER SETPOINT IS TYPICAL SET TO 30PSI + ELEVATION CHANGE FROM SKID TO HIGHEST SHOWER (1FT = .433PSI)
  7. A BACK PRESSURE REGULATOR IS REQUIRED FOR THE FOLLOWING CONDITION: SUPPLY PRESSURE < 30PSI + ELEVATION CHANGE FROM SKID TO HIGHEST SHOWER

OPTIONAL FEATURE THAT CAN BE CONFIGURED WHEN PURCHASED

THE ATTACHED DESIGNS ARE CONSIDERED TRADE SECRETS AND POTENTIALLY PATENTABLE. IN ACCORDANCE WITH CONFIDENTIALITY AND NON-DISCLOSURE AGREEMENT, THESE DESIGNS IN ACTUAL OR CONCEPTUAL FORMS CANNOT BE DISCLOSED, REPRODUCED OR USED WITHOUT HAWS' EXPRESS WRITTEN CONSENT.

APPROVALS		DATE	 1455 KLEPPLE LANE SPARKS, NEVADA 89431 USA
DRAWN	IR	09/18/20	
CHECKED	BSL	07/08/22	
APPROVED	BSL	07/08/22	
JOB NUMBER			

TITLE: 8780 - INDOOR EMERGENCY WATER TEMPERING SKID W/VFD PUMP

CUSTOMER INFO TAG #:

NOTICE OF PROPRIETARY INFORMATION		THIRD ANGLE PROJECTION
INFORMATION CONTAINED HEREIN IS THE SOLE PROPERTY OF HAWS CORPORATION AND THIS DOCUMENT AND THE DATA DISCLOSED HEREIN OR HEREWITH IS NOT TO BE REPRODUCED, USED, OR DISCLOSED IN WHOLE OR IN PART TO ANYONE WITHOUT THE PERMISSION OF HAWS CORPORATION.		
SCALE	SIZE	PART NUMBER
N/A	C	0580001086.D-VFD PID

REV 3