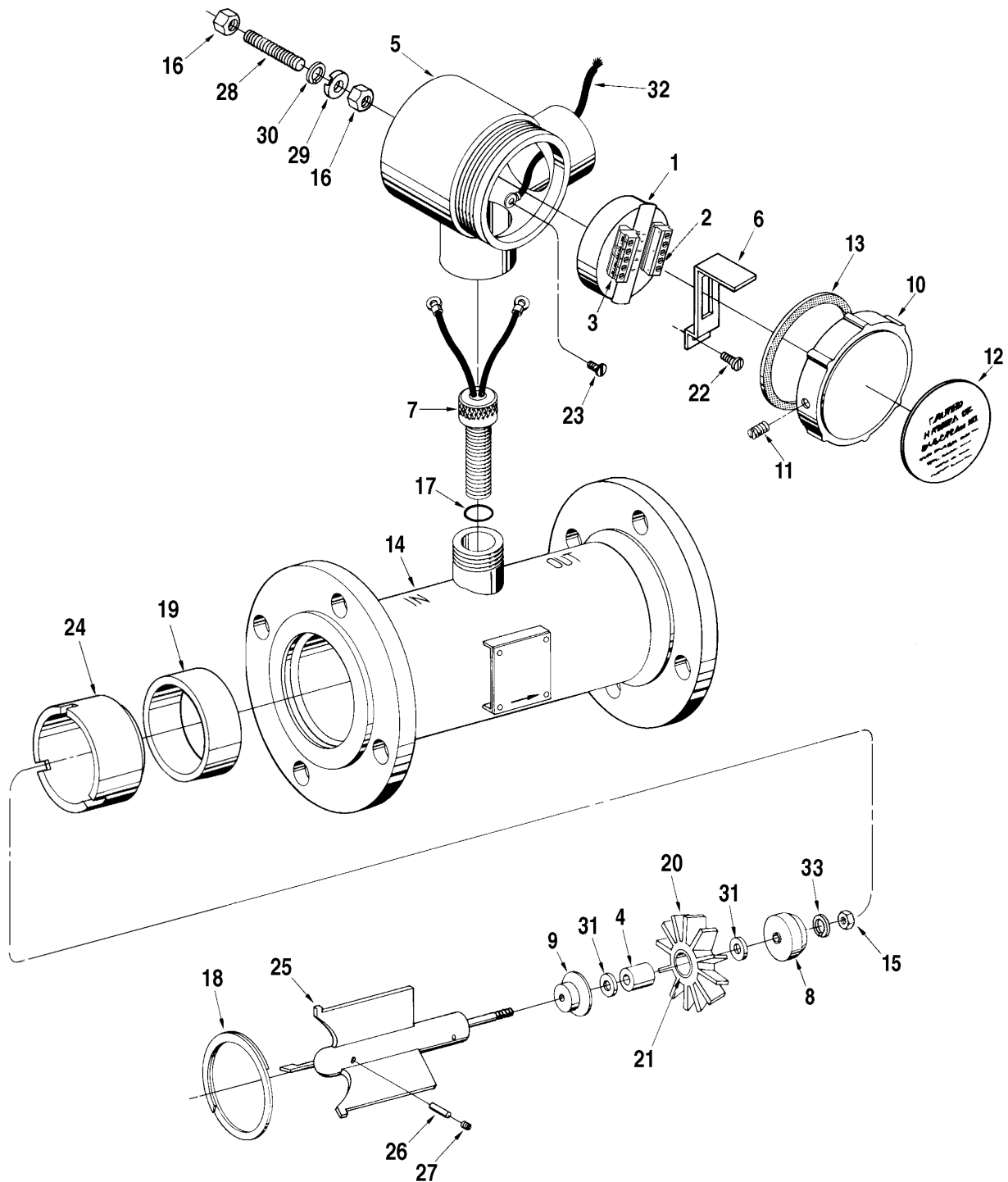


Meter, Turbine, 2 Inch, Guardsman™ G, Model K2BB and GLJ-H Model K2EB Series

Bulletin PO02002 Issue/Rev. 0.0 (04/12)



Item	Description	Qty.	Part Number
1	+ Preamplifier:		
	PA-6, 12 to 24 Vdc.....	#	230663-101
2	Connector, (1-5).....	#	645030-452
3	Connector, (6-10).....	#	645030-453
4	+ Bearing, Platform:		
	Horizontal.....	1	540305-209
	Vertical.....	1	540305-219
5	Box, Conduit.....	#	543256-200
6	Clip, Retaining.....	#	543192-203
7	R+ Coil, Pickup		
	R -100°F to 225°F.....	#	646655-401
	R -100°F to 400°F (High Temperature Version).....	#	Consult Factory
	R Mating Connector with Leads (High Temperature Version).....	#	Consult Factory
8	Cone, Downstream:		
	Horizontal/Bi-directional.....	1	543454-210
	Vertical.....	1	543454-211
9	Cone, Upstream:		
	Horizontal/Bi-directional.....	1	543453-202
	Vertical.....	1	543453-211
10	Cover, Conduit Box:		
	UL/CSA.....	#	543196-100
	ATEX – Manufactured in U.S.A.....	#	544057-101
	ATEX – Manufactured in Germany.....	#	544057-102
11	@2 Screw, Set, #6-32 x 1/4".....	#	643243-403
12	Label:		
	UL/CSA.....	#	543195-200
	ATEX Manufactured in U.S.A.....	#	544056-201
	ATEX Manufactured in Germany.....	#	544056-202
13	Gasket, Conduit Box.....	#	013403-200
14	@1 Housing.....	1	See Note 1
15	Nut, Shaft, #6-32 Hex:		
	Uni-directional or Bi-directional.....	1	644732-479
16	Nut, 1/4"-20 (ATEX version only).....	#	060060-001
17	O-Ring, (Carbon Steel Housing only).....	#	641069-474
18	+ Ring, Retaining.....	1	644420-403
19	Ring, Stator Locking (Used on 900# Flange Meters only).....	1	544142-203
20	+ Rotor Assembly:		
	Horizontal.....	1	544209-190
	Vertical.....	1	544209-103
21	Bearing, Rotor.....	1	540296-203
22	Screw, #10-32 x 1/4", Truss Head.....	#	009544-401
23	Screw, #10-32 x 1/4", Fillister Head.....	#	006110-002
24	Spacer, Stator (Used on 900# Flange Meters only).....	1	544324-211
25	Stator Assembly.....	1	544212-101
26	Pin, Dowel.....	1	644541-402
27	@2 Screw, Set, #8-32 x 3/16".....	1	645416-402
28	Stud (ATEX Version only).....	#	550773-001
29	Washer, Inverted (ATEX version only).....	#	550770-001
30	Washer, Lock, 1/4" (ATEX version only).....	#	006621-001
31	+ Washer, Thrust:		
	Horizontal.....	2	543522-203
	Vertical.....	2	543643-206
32	Wire, Ground.....	#	544058-101
33	Washer, Lock.....	1	6 4 3 1 6 4 - 4 1 4

Internal Parts Kit

@3	Uni-directional, Standard Rotor, Horizontal	544213-101
@3	Bi-directional, Standard Rotor, Horizontal	544213-102
@3	Uni-directional, Standard Rotor, Vertical	544213-121

- + Recommended stock.
- # Order quantity required.
- R Indicates revision since last issued.

@1 Note 1: Consult Factory, 814 898-5000, providing model and serial numbers and advise:

1. Uni or Bidirectional
2. Housing material
3. Flange Material
4. Flange Class (Pressure)
5. Number of Pickup Coil Bosses
6. Type of Flange

@2 Note 2: Thread-locking adhesive (Part No. 642917401) should be used to lock nut on stator shaft, #27, and to secure set screw #11.

@3 Note 3: If meter is used with a Strate Plate, when ordering Internal Parts Kit, use the prefix of 'FC' to the part number for the Internal Parts Kit required.

P0574.11X has been made obsolete and replaced by publication number PO02002 (April 2012).

The specifications contained herein are subject to change without notice and any user of said specifications should verify from the manufacturer that the specifications are currently in effect. Otherwise, the manufacturer assumes no responsibility for the use of specifications which may have been changed and are no longer in effect.

USA Operation
1602 Wagner Avenue
Erie, Pennsylvania 16510 USA
P:+1 814.898.5000

Germany Operation
Smith Meter GmbH
Regentstrasse 1
25474 Ellerbek, Germany
P:+49 4101 304.0

TechnipFMC
13460 Lockwood Road
Building S01
Houston, Texas 77044 USA
P:+1 281.591.4000

TechnipFMC.com

© TechnipFMC plc. 2020 All rights reserved. PO02002 Issue/Rev. 0.0 (04/12)