

## Model 792/793 Vane Meter

### Description

The 790 Series Vane meter for waterflood service and oils service, are compact, and reliable having only one moving part.

The corrosion resistant materials of the case and internal construction were selected specifically for secondary recovery water service, or oil service.

The register is a hermetically sealed unit with magnetic drive and is protectively sealed against moisture and dirt. No stuffing box, no wetted gear train, and dependable accuracy help make this meter the most reliable unit in its field.

Rotor assembly has teflon coated magnets for corrosion resistance and bearings are of a select carbon grade to extend rotor life.

The separate rotor shaft of chromed stainless steel is rigidly contained within the body to greatly improve meter life.

### Design Features

- Permanent volume record
- Full range accuracy
- Register isolated from line pressure
- Selected grade carbon bushings
- 75 BPH maximum
- No stuffing box
- 5000 psi working pressure
- Hermetically sealed register
- Non-wetted gear train

### Flow Capacities

7 to 75 BPH (1.1 - 11.9 M<sup>3</sup>/Hr.) - 793

3 to 30 BPH (.45 - 4.5 M<sup>3</sup>/Hr.) - 792

### Ratings

Flanges: 1" Female NPT - (Inlet and Outlet)

Pressure Drop:

20 psi (138 kPa) at Max. Flow - 793

5 psi (34.5 kPa) at Max. Flow - 792

Maximum Working Pressure: 5,000 psi (34,500 kPa)

Maximum Temperature: 180°F (82°C)

### Materials of Construction

Upper Case: Ni-Resist/Ductile Iron

Lower Case: Ni-Resist/Ductile Iron

Rotor: Glass Filled Polypropylene

O-Rings: Buna N

Rotor Shaft & Other Wetted parts: 316 St Stl



Model 792A High Pressure Water and Oil Service

Model 793A High Pressure Water and Oil Service

### WARNING

**Do NOT operate this instrument in excess of the specifications listed. Failure to heed this warning could result in serious injury and/or damage to the equipment.**

### Performance

Accuracy:  $\pm 2.5\%$  over 10 to 1 range

Repeatability:  $\pm 0.1\%$

### Registration

Units of Measure: 6 Digit Totalizer, Straight Reading

Register: BBL or Cubic Meters

Smallest Division: 1/100 BBL or 1/1000 Cubic Meter

### Viscosity

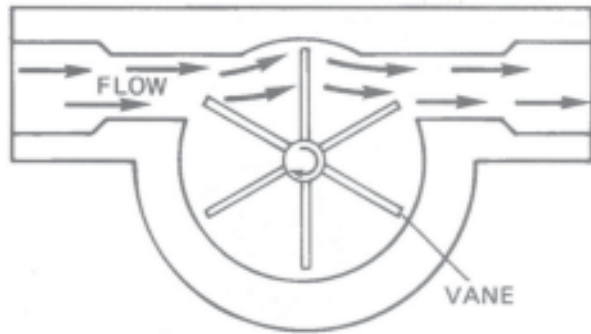
Maximum: 220 S.S.U.

### Shipping Weight and Volume (Approximate)

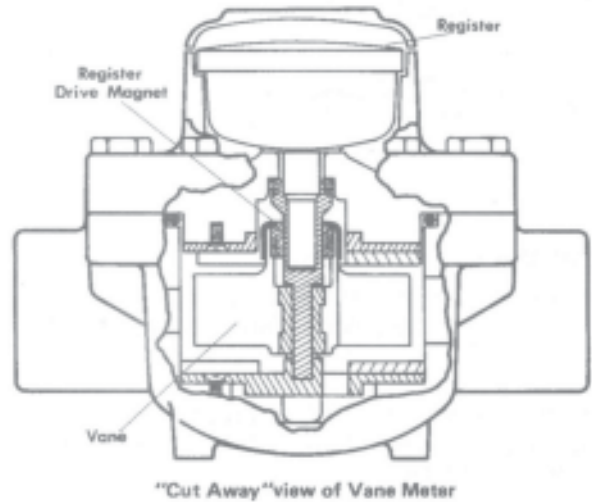
24 lbs @ 0.417 Cu. Feet

10.89 kg @ 0.012 Cu. Meters

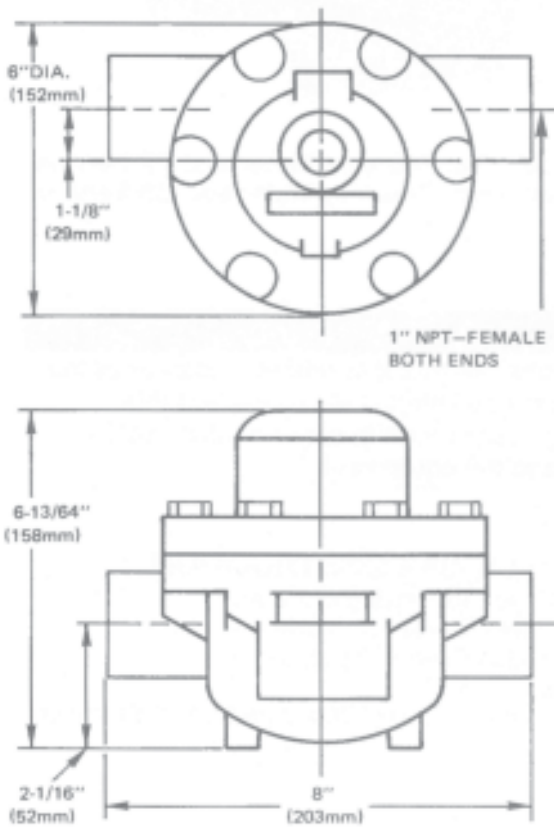
## Principle of Operation



Fluid is directed to the vane off center, which causes the six bladed vane to rotate. A magnet fixed to the vane, drives the sealed register by a magnetic coupling.



## Dimensions (For Certified Dimensional Prints - Consult Factory)



The contents of this publication are presented for informational purposes only, and while every effort has been made to ensure their accuracy, they are not to be construed as warranties or guarantees, express or implied, regarding the products or services described herein or their use or applicability. Brodie Meter Co., LLC reserves the right to modify or improve the designs or specifications of such products at any time without notice.

**BRODIE**  
International

19267 Highway 301 North (30461)  
PO Box 450 • Statesboro, GA 30459-0450  
Phone: (912) 489-0200 • Fax: (912) 489-0294  
[www.brodieintl.com](http://www.brodieintl.com)