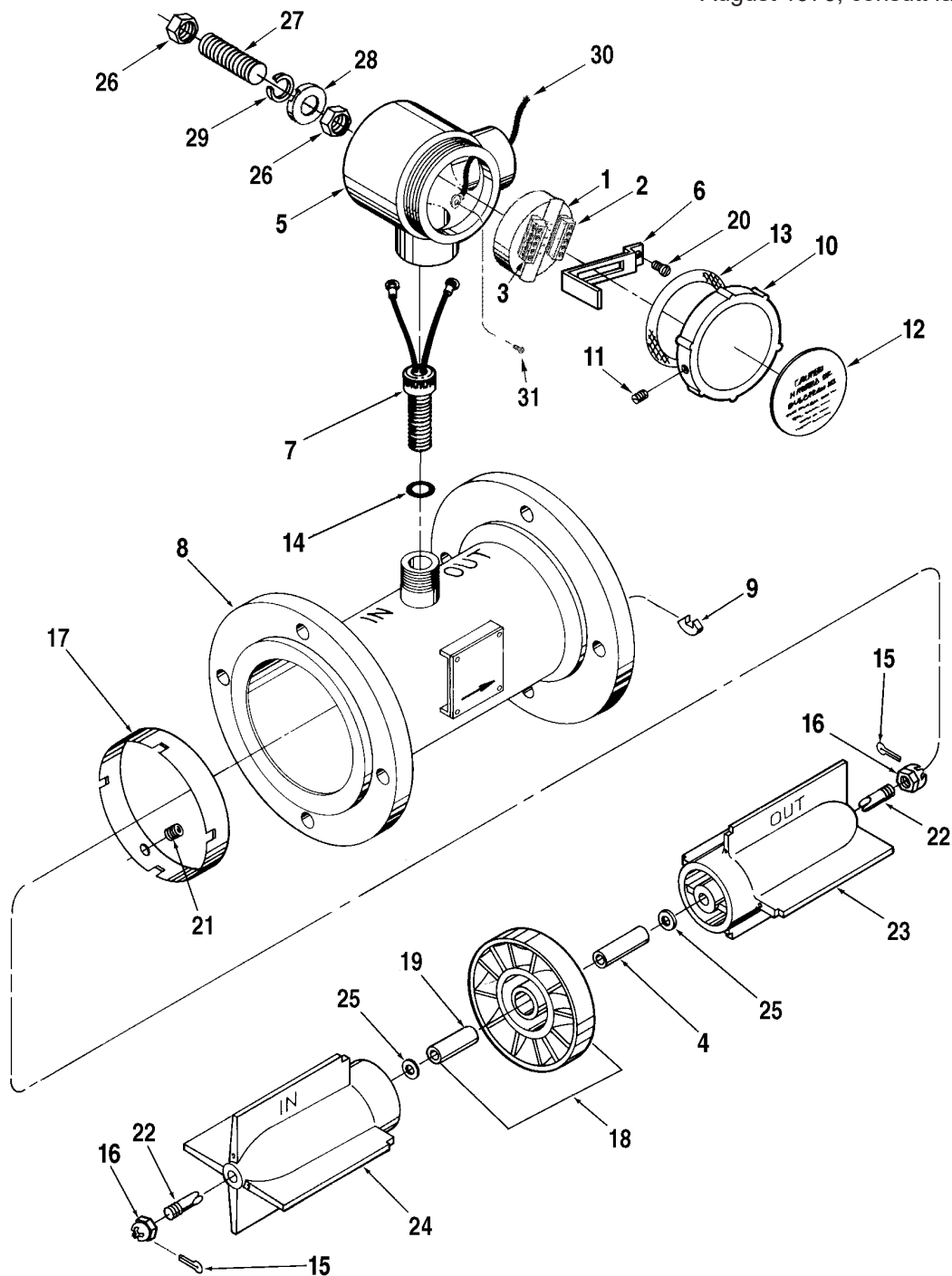


# Meter, Turbine, 20 Inch, Sentry Series,

Bulletin PO02021 Issue/Rev. 0.1 (05/15)

For meters manufactured prior to August 1976, consult factory.



Item		Description	Quantity	Part Number
1	+	Preamplifier, PA-6, 12 to 24 VDC	#	230663-101
2		Connector, (1-5)	#	645030-452
3		Connector, (6-10)	#	645030-453
4		Bearing, Platform	1	542709-200
5		Box, Conduit	#	543256-200
6		Clip, Retaining	1	543192-203
7		Coil, Pickup:		
		-100°F to +225°F	#	644327-401
	R	-100°F to +400°F (High Temperature Version)	#	641512-401
		Mating Connectors with Leads (High Temperature Version)	#	540244-100
8	@1	Housing	1	See Note 1
9		Key, Stator	1	542834-202
10		Cover, Conduit Box		
		UL/CSA Approvals	#	543196-100
		ATEX – Manufactured in U.S.A.	#	544057-101
		ATEX – Manufactured in Germany	#	544057-102
11		Screw, Set, #6-32 x 1/4"	#	643243-403
12		Label		
		UL/CSA Approvals	#	543195-200
		ATEX - Manufactured in U.S.A.	#	544056-201
		ATEX - Manufactured in Germany	#	544056-202
13	+	Gasket, Cover	#	013403-200
14		O-Ring	#	641069-474
15	+	Pin, Cotter	2	006738-001
16	+	Nut, Castle, 1-12	2	643729-408
17	@2	Ring, Deflector:		
		Unidirectional: Stainless Steel	1	542702-201
		Bidirectional: Stainless Steel	2	543054-220
18	+	Rotor Assembly	1	544464-191
19		Bearing, Rotor	1	542708-200
20		Screw, Machine, #10-32 x 1/4"	#	009544-401
21	R	Screw, Set, 1/4-20 x 1/4"	#	645690-402
22	R	Shaft, Rotor	1	544764-201
23	R@3	Stator, Downstream, Stainless Steel	#	544757-101
24	R@4	Stator, Upstream, Stainless Steel	#	544757-102
25	+	Washer, Thrust	2	543851-220
26		Nut, 1/4" Lock, (ATEX version only)	#	060060-001
27		Stud (ATEX version only)	#	550773-001
28		Washer, Inverted Tag, (ATEX version only)	#	550770-001
29		Washer, 1/4" Lock, (ATEX version only)	#	006621-001
30		Ground Wire, (UL/CSA version only)	#	544058-101
31		Screw, #10-32 x 1/4", (UL/CSA version only)	#	006110-002

### Internal Parts Kit

	Description	Part Number
	Unidirectional	C/F
	Bidirectional	C/F
+	Recommended stock.	
#	Order quantity required.	
R	Indicates revision since last update.	
@1 Note 1	Consult Factory, (814) 898 5000, providing Model and Serial Numbers and advising: <ol style="list-style-type: none"> <li>1. Uni or Bidirectional</li> <li>2. Housing Material</li> <li>3. Flange Material</li> <li>4. Flange Class (Pressure)</li> <li>5. Flange Type</li> <li>6. Number of Pickup Coils</li> </ol>	
@2 Note 2	Deflector ring material must be same as housing tube material.	
@3 Note 3	Order quantity 1 for unidirectional application, quantity 2 for bidirectional application.	
@4 Note 4	Order quantity 1 for unidirectional application, quantity 0 for bidirectional application.	
Note 5	Serial number information. When ordering component parts, give complete serial number (e.g., alpha and numeric prefix and suffix). Serial number may be found on nameplate and stamped on housing tube by Number 1 Boss.	

P0594.03X has been made obsolete and replaced by publication number PO02021 (May 2015).

The specifications contained herein are subject to change without notice and any user of said specifications should verify from the manufacturer that the specifications are currently in effect. Otherwise, the manufacturer assumes no responsibility for the use of specifications which may have been changed and are no longer in effect.

USA Operation  
1602 Wagner Avenue  
Erie, Pennsylvania 16510 USA  
P:+1 814.898.5000

Germany Operation  
Smith Meter GmbH  
Regentstrasse 1  
25474 Ellerbek, Germany  
P:+49 4101 304.0

TechnipFMC  
13460 Lockwood Road  
Building S01  
Houston, Texas 77044 USA  
P:+1 281.591.4000

**TechnipFMC.com**

© TechnipFMC plc. 2020 All rights reserved. PO02021 Issue/Rev. 0.1 (05/15)