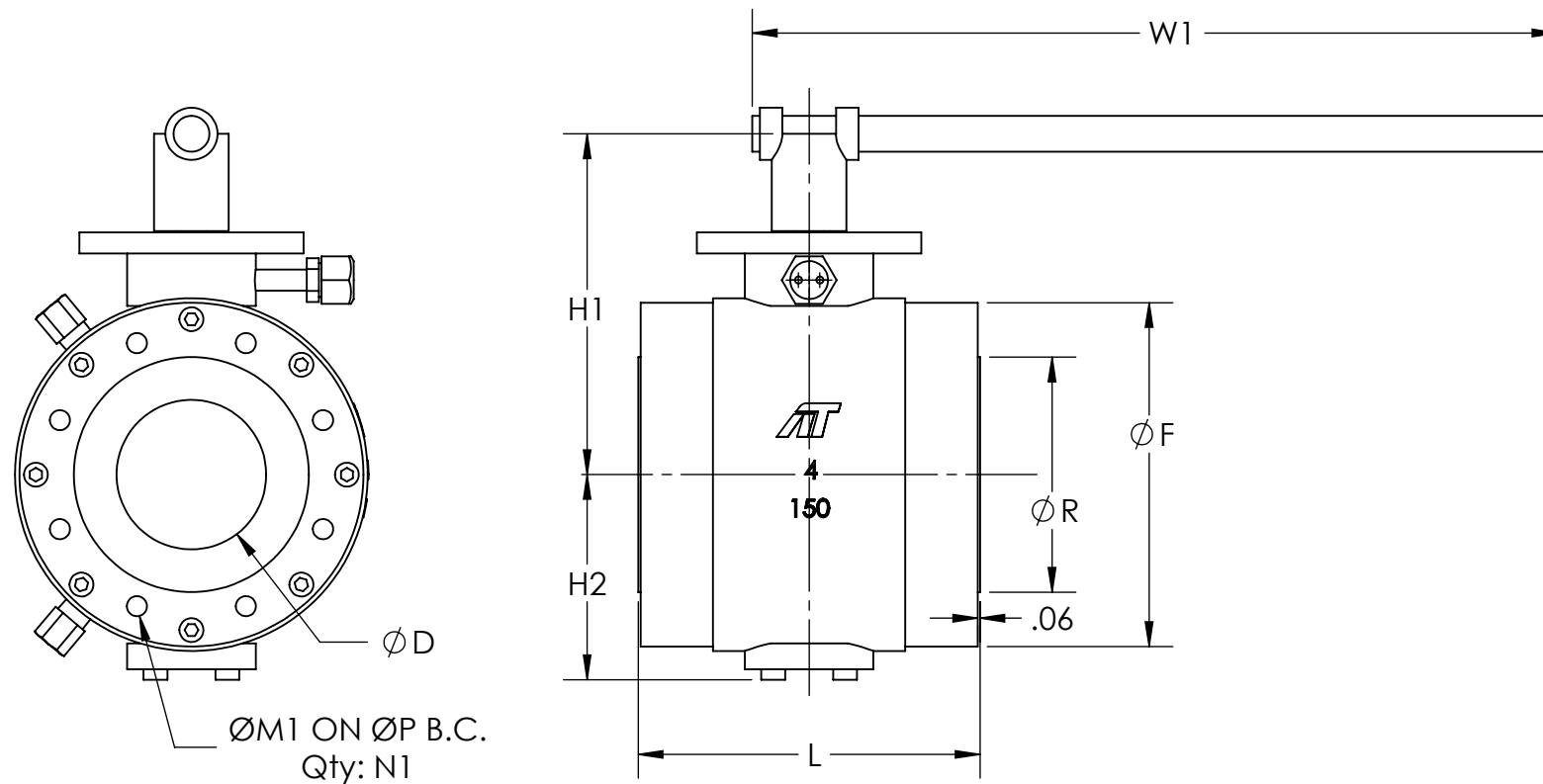


SOFT SEAT TRUNNION STANDARDS	
DESIGN	API 6D, ASME B16.34, CSA Z245.15-13
END CONNECTIONS	Raised Face (RF)
TEMPERATURE RANGE	-50°F to 250°F
FACE TO FACE DIMENSION	API 6D, ASME B16.10
FLANGED DIMENSION	ASME B16.5, ASME B16.47
BODY PRESSURE TESTING	API 6D, ASME B16.34, API 598
SEAT LEAKAGE TESTING	API 6D, API 598
NACE	MR0175/MR0103
MOUNTING	ISO 5211
MARKING SYSTEM FOR VALVES	MSS SP-25, ISO 5209
SAFETY INEGRITY	IEC 61508:2010; SIL 3
MATERIAL CERTIFICATION	EN 10204-3.1
QUALITY ASSURANCE	ISO 9001:2015; CE/PED 2014/68/EU



**Dimensions**

SIZE	ØD	L	ØF	ØR	H1	H2	W1	M1	P	N1
2"	1.94	7.00	6.00	3.62	6.89	3.35	14.49	5/8-11	4.75	4
3"	2.94	8.00	7.50	5.00	7.64	4.11	17.24	5/8-11	6.00	4
4"	3.94	9.00	9.00	6.19	8.98	5.40	21.18	5/8-11	7.50	8

PART NAME	TS3		TSW
	LOW TEMP STEEL	STAINLESS STEEL	LOW TEMP STEEL
BODY	A350 LF2	A182 F316	A350 LF2
BALL	A350 LF2 ENP	A182 F316	A350 LF2 ENP
CLOSURE	A350 LF2	A182 F316	A350 LF2
SEAT RING	A350 LF2 ENP	A182 F316	A350 LF2 ENP
SEAT INSERT	RTFE	RTFE	RTFE
SPRING	Inconel® X750	Inconel® X750	Inconel® X750
BODY COVER	A350 LF2	A182 F316	A350 LF2
STEM	A350 LF2/4140 ENP	A182 F316	A350 LF2/4140 ENP
ADAPTER PLATE	A350 LF2	A182 F316	A350 LF2
BEARING RETAINER	A350 LF2	A182 F316	A350 LF2
ANTI-STATIC DEVICE	Stainless Steel	Stainless Steel	Stainless Steel
FIRE-SAFE SEAL	Graphite	Graphite	NA
O-RING	HNBR	FKM	HNBR
THRUST WASHER	SS/TFE	SS/TFE	SS/TFE
BEARING	SS/TFE	SS/TFE	SS/TFE
STUD	A320 L7M	A193 B8M	NA
NUT	A194 7M	A194 8M	NA
CAP SCREW	A320 L7M	A193 B8M	A320 L7M
SEALANT FITTING	Stainless Steel	Stainless Steel	Stainless Steel
VENT VALVE	NA	NA	Stainless Steel
DRAIN VALVE	Stainless Steel	Stainless Steel	Stainless Steel

SIZE	TORQUE (in-lbs)	Cv
2"	308	420
3"	584	1290
4"	859	2350

**STANDARD IN STOCK VALVE PART NUMBERS:**

- 3": FFTS3F-L1XX-0300-9HR1GNX-H
- 4": FFTS3F-L1XX-0400-9HR1GNX-H
- 3": FFTS34-L1XX-0300-SCR1GNX-H
- 4": FFTS34-L1XX-0400-SCR1GNX-H
- 2": FFTSWF-L1XX-0200-9HR1GBX-H
- 3": FFTSWF-L1XX-0300-9HR1GBX-H
- 4": FFTSWF-L1XX-0400-9HR1GBX-H

SEE THE TS SERIES TRUNNION CATALOG FOR MORE INFORMATION.



9955 INTERNATIONAL BLVD.  
CINCINNATI, OHIO 45246  
PHONE: (513) 247-5465  
FAX: (513) 247-5462

DRAWN BY NPM CHECKED BY CMB RELEASED BY CMB  
DATE 04/29/22 DATE 06/09/22 DATE 06/09/22

**VALVES, ACTUATORS, AND AUTOMATION CONTROLS**

SHEET 1 of 1

MATERIAL  
SEE BOM

DRAWING NO.  
P04267

REVISION

THE DESIGN AND DISCLOSURE CONTAINED IN THIS DRAWING WAS ORIGINATED BY, AND IS EXCLUSIVE PROPERTY OF A-T CONTROLS, INC. IT IS FURNISHED FOR VENDOR INFORMATION ONLY AND IS NOT AN AUTHORIZATION OR LICENSE TO MAKE THIS CONSTRUCTION OR TO FURNISH THIS INFORMATION TO OTHERS. ALL DRAWINGS MUST BE RETURNED TO A-T CONTROLS, INC. ON DEMAND. THIS DRAWING IS NOT TO BE REPRODUCED OR COPIED IN ANY FORM WITHOUT THE EXPRESS WRITTEN PERMISSION OF A-T CONTROLS, INC.

DO NOT SCALE DRAWING  
DESCRIPTION  
FLANGELESS LUG STYLE TRUNNION