

# SPRING RETURN ELECTRIC

Not Available With Manual Override



## NEMA 4/6/7 Enclosure

### Approvals

#### A.C. Models Only

Canadian Standards Association

CSA NRTL/C—Enclosure 4

CSA NRTL/C—Class I, Divisions 1 & 2, Groups C & D

CSA NRTL/C—Class II, Divisions 1 & 2, Groups E, F & G

CSA NRTL/C—Approved to UL standard No. 429, Electrically Operated Valves

CSA NRTL/C—Approved to UL Standard No. 1203, Electrical Equipment for use in Explosion - proof And Dust - Ignition - proof Hazardous (Classified) Locations

## Model

SURE49

## Typical Application

For on/off and modulating control of:

- Part turn ball, butterfly, plug valves or rotary dampers when emergency shutdown or shutoff capability is required in the event of a loss of power.



## Temperature Range

Standard: -40°F to +150°F  
-40°C to +65°C

Optional: -60°F to +150°F  
-50°C to +65°C

Optional:  
Compliance to NFPA 130, capable of operation after exposure to ambient temperature of 482°F (250°C) for a minimum of 1 hour.



## Voltage

115 VAC, 1 Phase, 50/60 Hz.  
230 VAC, 1 Phase, 50/60 Hz.  
24 VAC, 1 Phase, 50/60 Hz.  
12VDC, 24VDC



## Torque Range

600 pound inches spring end  
(68 newton meters)



## Speed Range

5, 15 & 30 seconds for 90°  
revolution, motor operation

2 to 5 seconds,  
spring operation

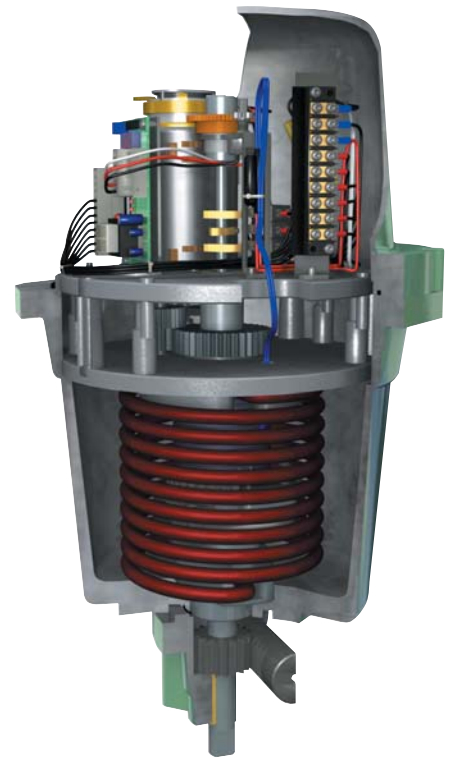


## Spring

Helical torsion spring,  
spring steel, XYLAN® coated

## Standard Features

**AC Voltages**  
4 – SPDT Switches, PTC  
Heater, Motor Brake  
**DC Voltages**  
2 – SPDT (High Current)  
Switches, PTC Heater,  
Motor Brake



# SPRING RETURN ELECTRIC

## 115 & 230 VAC, 1 Phase, 50/60 Hz.

SUREPOWER	Model	Output Torque Inch Pounds (N.m)	Electrical Speed of Operation — 60 Hz. (50 Hz.)	Spring Speed of Operation	Duty Cycle Rating 115 VAC	Duty Cycle Rating 220 VAC	Current Ratings 115 VAC		Current Ratings 220 VAC	
							N.L.A.*	L.R.A.*	N.L.A.*	L.R.A.*
							Sure 25-5	300 (34)	5 seconds/90° (6 seconds/90°)	2 seconds/90°
Sure 25-10	300 (34)	10 seconds/90° (12 seconds/90°)	2 seconds/90°	50% (2)	50% (2)	1.00	1.55	CF**	CF**	
Sure 24-10	300 (34)	10 seconds/90° (12 seconds/90°)	2 seconds/90°	25% (1)	25% (1)	.70	1.05	.45	.65	
Sure 49-5	600 (68)	5 seconds/90° (6 seconds/90°)	2 seconds/90°	25% (1)	25% (1)	1.10	1.80	1.00	1.20	
Sure 49-15	600 (68)	15 seconds/90° (18 seconds/90°)	2 seconds/90°	25% (1)	25% (1)	.55	1.55	.35	.90	
Sure 49-30	600 (68)	30 seconds/90° (35 seconds/90°)	2 seconds/90°	50% (2)	50% (2)	.65	.70	.30	.35	
Sure 100-10	1,200 (136)	10 seconds/90° (12 seconds/90°)	5 seconds/90° (max) +	25% (1)	25% (1)	1.90	2.90	.90	1.35	
Sure 100-30	1,200 (136)	30 seconds/90° (35 seconds/90°)	7 seconds/90° (max) +	50% (2)	50% (2)	.65	.95	.35	.45	
Sure 150-15	1,800 (136)	15 seconds/90° (18 seconds/90°)	5 seconds/90° (max) +	25% (1), (2)	25% (1), (2)	1.90	2.90	.90	1.35	

\* (N.L.A.) — No Load Ampere (L.R.A.) — Locked Rotor Ampere (1) — Open/Close Service (2) — Open/Close or Modulating Service  
 \*\* (CF) — Consult Factory + — Approximate, Based on Load

## 24 VAC

SUREPOWER	Model	Output Torque Inch Pounds (N.m)	Electrical Speed of Operation — 60 Hz. (50 Hz.)	Spring Speed of Operation	Duty Cycle Rating 24 VAC	Current Ratings 24 VAC	
						N.L.A.*	L.R.A.*
						Sure 49-30	600 (68)

## 12 & 24 VDC

SUREPOWER	Model	Output Torque Inch Pounds (N.m)	Electrical Speed of Operation	Spring Speed of Operation	Duty Cycle Rating 12 VDC	Duty Cycle Rating 24 VDC	Current Ratings 12 VDC		Current Ratings 24 VDC	
							N.L.A.*	L.R.A.*	N.L.A.*	L.R.A.*
							Sure 49-5	600 (68)	5 seconds/90°	2 seconds/90° (1)

### Limit Switches (Sure 24 & 25)

**Standard:** Two-single pole, double throw type (SPDT) with an option: for 2 or 4 additional

### Limit Switches (24 VDC Models)

**Ratings:** UL and CSA listed.  
 MIL-PRF-8805 Qualified Listing  
 25 amp at 277 VAC; 1 H.P. at 125 VAC;  
 2 H.P. at 250 VAC

### Isolation Relays

To operate multiple actuators in parallel from a single signal requires isolating relays in the field wiring. Consult factory.

### Limit Switches (Sure 49, 100 & 150)

**Standard:** Four-single pole, double throw type (SPDT) with an option: for 2 additional

**Ratings:** UL and CSA listed.  
 15 amp & 1/2 H.P. at 125 or 250 VAC;  
 1/2 amp at 125 VDC; 1/4 amp at 250 VDC;  
 Lamp Load - 5 amp at 120 VAC

**Optional:** All double pole, double throw type (DPDT).

**Ratings:** UL and CSA listed.  
 10 amp at 125/250 VAC (form ZZ);  
 1/2 H.P. at 125 VDC; 3/4 H.P. at 250 VAC

### Heater

PTC (Positive Temperature Coefficient)  
 Heater Standard in all A. C. Voltage Models

### Duty Cycle

The percentage of time the electric motor is energized vs. the time it is at rest, in reversing duty and with the actuator running at it's rated load - maximum published torque.

### Standard Modulating Duty Rating

- 12 motor starts (corrections) per minute.
- At the rated duty cycle for that model.
- With the speed of operation a minimum of 15 seconds for 90° or slower.
- With positioning accuracy of (+/-) 1% of total span.