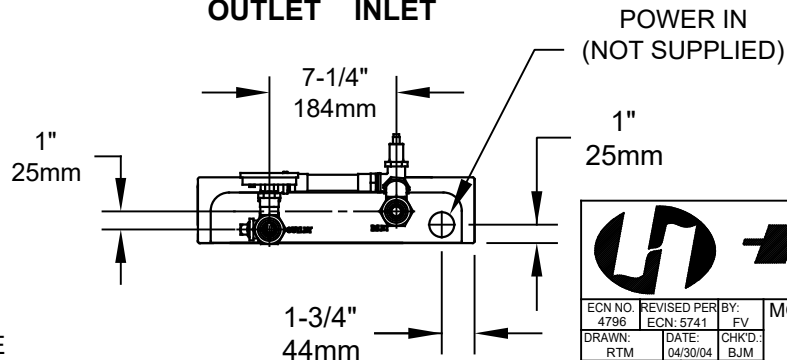


NOTES:

1. CAUTION: THIS UNIT IS INTENDED "FOR INDOOR USE ONLY"
2. USE TEFLON THREAD SEAL TAPE ON ALL WATER CONNECTIONS. **DO NOT USE PIPE DOPE.**
3. DIMENSIONS MAY VARY BY: $\pm 1/2"$ [12.7mm].
4. HEATER IS PRESET AT FACTORY FOR 80° F (26.7° C) OUTLET WATER TEMPERATURE



1455 KLEPPE LANE
SPARKS, NEVADA 89431
(775) 359-4712 FAX (775) 359-7424
E-MAIL: HAWS@HAWS.CO.COM
WEBSITE: WWW.HAWS.CO.COM

ECN NO. 4796	REVISED PER BY: FV	MODEL(S)	TWBS.EW.H	PART NUMBER	0002080380.D
DRAWN: RTM	DATE: 04/30/04	CHK'D: BJM		REVISION	13
APPROVED: FV	DATE: 11/12/21	SCALE: 1:10	DRAWING TYPE: INSTALLATION	SIZE: A	SHEET 1 OF 1